

SUPPLEMENT NUMBER 1

**STANDARD SPECIFICATIONS FOR
COMPOSITE STEEL JOISTS
AND
CODE OF STANDARD PRACTICE**

DECEMBER 31, 2010



The information presented in this publication has been developed by the Steel Joist Institute and is produced with recognized engineering principles and is for general information only. The SJI and its committees have made a concerted effort to present accurate, reliable, and useful information on the design of composite steel joists. Application of this information should not be used or relied upon for any specific project without competent professional assessment of its accuracy, suitability and applicability by a licensed professional engineer or architect. The publication of the material contained in this catalog is not intended as a representation or warranty on the part of the Steel Joist Institute. Any person making use of this information does so at one's own risk and assumes all liability arising from such use.

Copyright © 2010

By

Steel Joist Institute

All rights reserved. This catalog or any part thereof may not be reproduced in any form without the written permission of the Steel Joist Institute.

Printed in the United States of America



STANDARD SPECIFICATION FOR COMPOSITE STEEL JOISTS, CJ-SERIES

Adopted by the Steel Joist Institute May 10, 2006
Revised to May 18, 2010, Effective December 31, 2010

SECTION 100. SCOPE AND DEFINITION

100.1 SCOPE

The *Standard Specification for Composite Steel Joists, CJ-Series*, hereafter referred to as the Specification, covers the design, manufacture, application, and erection stability and handling of Composite Steel Joists **CJ-Series** in buildings or other structures, where other structures are defined as those structures designed, manufactured, and erected in a manner similar to buildings. **CJ-Series** joists shall be designed using Load and Resistance Factor Design (LRFD) in accordance with this Specification. Composite Steel Joists shall be erected in accordance with the Occupational Safety and Health Administration (OSHA), U.S. Department of Labor, Code of Federal Regulations 29CFR Part 1926 Safety Standards for Steel Erection, Section 1926.757 Open Web Steel Joists.

This Specification includes Sections 100 through 107.

100.2 DEFINITION

The term "Composite Steel Joists **CJ-Series**", as used herein, refers to open web, parallel chord, load-carrying members utilizing hot-rolled or cold-formed steel, including cold-formed steel whose yield strength has been attained by cold working, suitable for the direct support of one-way floor or roof systems. Shear connection between the joist top chord and overlying concrete slab allows the steel joist and slab to act together as an integral unit after the concrete has adequately cured. The **CJ-Series** joists have been standardized in depths from 10 inches (254 mm) through 96 inches (2438 mm), for spans up through 120 feet (36576 mm).

The **CJ-Series** standard joist designation is determined by its nominal depth, the letters "**CJ**", followed by the total uniform composite load, uniform composite live load, and finally the uniform composite dead load. Composite Steel Joists shall be designed in accordance with these specifications to support the loads defined by the **specifying professional**.

Two standard types of **CJ-Series** joists are designed and manufactured. These types are underslung (top chord bearing) or square-ended (bottom chord bearing), with parallel chords.

100.3 STRUCTURAL DESIGN DRAWINGS AND SPECIFICATIONS

The design drawings and specifications shall meet the requirements in the *Code of Standard Practice for Composite Steel Joists*, except for deviations specifically identified in the design drawings and/or specifications.



SECTION 101. REFERENCES

101.1 REFERENCED SPECIFICATIONS, CODES AND STANDARDS

ACI International (ACI)

ACI 318-08, *Building Code Requirements for Structural Concrete and Commentary*

ACI 318M-08, *Metric Building Code Requirements for Structural Concrete and Commentary*

American Institute of Steel Construction, Inc. (AISC)

ANSI/AISC 360-10 *Specification for Structural Steel Buildings*

American Iron and Steel Institute (AISI)

ANSI/AISI S100-2007 *North American Specification for Design of Cold-Formed Steel Structural Members*

ANSI/AISI S100-07/S1-09 , *Supplement No. 1 to the North American Specification for the Design of Cold-Formed Steel Structural Members, 2007 Edition*

ANSI/AISI S100-07/S2-10 , *Supplement No. 2 to the North American Specification for the Design of Cold-Formed Steel Structural Members, 2007 Edition*

American Society of Testing and Materials, ASTM International (ASTM)

ASTM A6/A6M-09, Standard Specification for General Requirements for Rolled Structural Steel Bars, Plates, Shapes, and Sheet Piling

ASTM A36/A36M-08, Standard Specification for Carbon Structural Steel

ASTM A242/242M-04 (2009), Standard Specification for High-Strength Low-Alloy Structural Steel

ASTM A307-07b, Standard Specification for Carbon Steel Bolts and Studs, 60 000 PSI Tensile Strength

ASTM A325/325M-09, Standard Specification for Structural Bolts, Steel, Heat Treated, 120/105 ksi [830 MPa] Minimum Tensile Strength

ASTM A370-09ae1, Standard Test Methods and Definitions for Mechanical Testing of Steel Products

ASTM A500/A500M-07, Standard Specification for Cold-Formed Welded and Seamless Carbon Steel Structural Tubing in Rounds and Shapes

ASTM A529/A529M-05, Standard Specification for High-Strength Carbon-Manganese Steel of Structural Quality

ASTM A572/A572M-07, Standard Specification for High-Strength Low-Alloy Columbium-Vanadium Structural Steel

ASTM A588/A588M-05, Standard Specification for High-Strength Low-Alloy Structural Steel, up to 50 ksi [345 MPa] Minimum Yield Point, with Atmospheric Corrosion Resistance

ASTM A606/A606M-09, Standard Specification for Steel, Sheet and Strip, High-Strength, Low-Alloy, Hot-Rolled and Cold-Rolled, with Improved Atmospheric Corrosion Resistance

ASTM A992/A992M-06a, Standard Specification for Structural Steel Shapes

ASTM A1008/A1008M-09, Standard Specification for Steel, Sheet, Cold-Rolled, Carbon, Structural, High-Strength Low-Alloy and High-Strength Low-Alloy with Improved Formability, Solution Hardened, and Bake Hardenable

ASTM A1011/A1011M-09a, Standard Specification for Steel, Sheet and Strip, Hot-Rolled, Carbon, Structural, High-Strength Low-Alloy, High-Strength Low-Alloy with Improved Formability, and Ultra-High Strength

American Welding Society (AWS)

- AWS A5.1/A5.1M-2004, Specification for Carbon Steel Electrodes for Shielded Metal Arc Welding
- AWS A5.5/A5.5M:2006, Specification for Low-Alloy Steel Electrodes for Shielded Metal Arc Welding
- AWS A5.17/A5.17M-97:R2007, Specification for Carbon Steel Electrodes and Fluxes for Submerged Arc Welding
- AWS A5.18/A5.18M:2005, Specification for Carbon Steel Electrodes and Rods for Gas Shielded Arc Welding
- AWS A5.20/A5.20M:2005, Specification for Carbon Steel Electrodes for Flux Cored Arc Welding
- AWS A5.23/A5.23M:2007, Specification for Low-Alloy Steel Electrodes and Fluxes for Submerged Arc Welding
- AWS A5.28/A5.28M:2005, Specification for Low-Alloy Steel Electrodes and Rods for Gas Shielded Arc Welding
- AWS A5.29/A5.29M:2005, Specification for Low Alloy Steel Electrodes for Flux Cored Arc Welding
- AWS D1.1/D1.1M-2004, Structural Welding Code – Steel

Steel Deck Institute (SDI)

- ANSI/SDI C1.0-2006, Standard for Composite Steel Floor Deck
- ANSI/SDI NC-2010, Standard for Noncomposite Steel Floor Deck

101.2 OTHER REFERENCES

The following references are non-ANSI approved documents and as such, are provided solely as sources of commentary or additional information related to the topics in this Specification:

American Society of Civil Engineers (ASCE)

- SEI/ASCE 7-10 *Minimum Design Loads for Buildings and Other Structures*
- ASCE Task Committee on Design Criteria for Composite Structures in Steel and Concrete (1996), *Proposed Specification and Commentary for Composite Joists and Composite Trusses*, *ASCE Journal of Structural Engineering*, Vol. 122, No. 4, April.

Federal Register, Department of Labor, Occupational Safety and Health Administration (2001), 29 CFR Part 1926 Safety Standards for Steel Erection; Final Rule, §1926.757 Open Web Steel Joists - January 18, 2001, Washington, D.C.

Steel Joist Institute (SJI)

- SJI-CJ COSP-2007 and 2010 Supplement, *Code of Standard Practice for Composite Steel Joists*
- Technical Digest No. 3 (2007), *Structural Design of Steel Joist Roofs to Resist Ponding Loads*
- Technical Digest No. 5 (1988), *Vibration of Steel Joist-Concrete Slab Floors*
- Technical Digest No. 6 (2011), *Structural Design of Steel Joist Roofs to Resist Uplift Loads*
- Technical Digest No. 8 (2008), *Welding of Open Web Steel Joists and Joist Girders*
- Technical Digest No. 9 (2008), *Handling and Erection of Steel Joists and Joist Girders*
- Technical Digest No. 10 (2003), *Design of Fire Resistive Assemblies with Steel Joists*
- Technical Digest No. 11 (2007), *Design of Lateral Load Resisting Frames Using Steel Joists and Joist Girders*

Steel Structures Painting Council (SSPC) (2000), *Steel Structures Painting Manual, Volume 2, Systems and Specifications*, Paint Specification No. 15, Steel Joist Shop Primer, May 1, 1999, Pittsburgh, PA.



- Alsamsam, Iyad (1988), *An Experimental Investigation Into the Behavior of Composite Open Web Steel Joists*, Masters Thesis, Department of Civil and Mineral Engineering Institute of Technology, University of Minnesota, MN.
- Atkinson, A.H., and Cran, J.A. (1972), *The Design and Economics of Composite Open-Web Steel Joists*, Canadian Structural Engineering Conference.
- Avci, Onur and Easterling, Sam (2003), *Strength of Welded Weak Position Shear Studs*, Report No. CE/VPI-ST03/08, Department of Civil and Environmental Engineering, Virginia Polytechnic Institute and State University, Blacksburg, VA.
- Azmi, M.H. (1972), *Composite Open-Web Trusses with Metal Cellular Floor*, A Master of Engineering Thesis, McMaster University, Hamilton, Ontario, April.
- Band, B.S. and Murray, T.M. (1999), *Floor Vibrations: Ultra-Long Span Joist Floors*, *Proceedings of the 1999 Structures Congress*, American Society of Civil Engineers, New Orleans, Louisiana, April 18-21.
- Boice, Michael and Murray, T.M. (2002), *Report of Floor Vibration Testing*, *University of Tennessee Medical Center, Knoxville, TN*, Report CE/VPI-ST02/10, Department of Civil and Environmental Engineering, Virginia Polytechnic Institute and State University, Blacksburg, VA.
- Brattland, A., and Kennedy, D.J. Laurie (1992), *Flexural Tests of Two Full-Scale Composite Trusses*, *Canadian Journal of Civil Engineering*, Volume 19, Number 2, April, pp. 279-295.
- CISC (1984), Chien, E.Y.L., and Ritchie, J.K., *Design and Construction of Composite Floor Systems*, Chapter 5 – “Composite Open Web Steel Joists and Trusses”, Canadian Institute of Steel Construction, Willowdale, Ontario.
- CISC (1997), *Handbook of Steel Construction*, CAN/CSA-S16.1-94, Section 16 - “Open-Web Steel Joists”, 7th Edition, Canadian Institute of Steel Construction, Willowdale, Ontario.
- Corrin, Michael (1993), Stanley D. Lindsey & Associates, Ltd, *312 Elm Street- Innovation Pays Off*, *The Military Engineer*, No. 554, January–February.
- Cran, J.A. (1972), *Design and Testing Composite Open Web Steel Joists*, Technical Bulletin 11, Stelco, January.
- Curry, Jamison Hyde (1988), *Full Scale Tests on Two Long-Span Composite Open-Web Steel Joists*, Masters Thesis, Department of Civil and Mineral Engineering Institute of Technology, University of Minnesota, MN.
- Easterling, W.S., Gibbings, D.R. and Murray, T.M. (1993) *Strength of Shear Studs in Steel Deck on Composite Beams and Joists*, *AISC Engineering Journal*, Second Quarter, pp 44-55.
- Easterling, W. Samuel (1999) *Composite Joist Behavior and Design Requirements*, *ASCE Structures Congress*, New Orleans, LA, April 18 – 21.
- Easterling, W. Samuel, Samuelson, David and Murray, Thomas M. (2000), *Behavior and Design of Longspan Composite Joists*, *Fourth ASCE Composite Construction in Steel and Concrete Conference*, Banff, Alberta, Canada, May 28 – June 2.
- Gibbings, D. R. and Easterling, W.S. (1991), *Strength of Composite Long Span Joists*, Report CE/VPI-ST91/02, Department of Civil and Environmental Engineering, Virginia Polytechnic Institute and State University, Blacksburg, VA.
- Gibbings, D. R. and Easterling, W.S. (1991), *Strength of Composite Long Span Joists- Addendum*, Report CE/VPI-ST91/02 (Addendum), Department of Civil and Environmental Engineering, Virginia Polytechnic Institute and State University, Blacksburg, VA.
- Lembeck, Jr., H.G. (1965), *Composite Design of Open Web Steel Joists*, M.Sc. Thesis, Washington University, St. Louis, MO.
- Leon, R.T. and Curry, J., (1987), *Behavior of Long Span Composite Joists*, *ASCE Structures Congress Proceedings.*, Florida, August, pp. 390-403.
- Lyons, John; Easterling, Sam; and Murray, Tom (1994), *Strength of Welded Shear Studs, Vols. I and II*, Report No. CE/VPI-ST94/07, Department of Civil and Environmental Engineering, Virginia Polytechnic Institute and State University, Blacksburg, VA.

Nguyen, S.; Gibbings, D. R.; Easterling, W.S.; and Murray, T. M. (1992), *Elastic –Plastic Finite Element Modeling of Long Span Composite Joists with Incomplete Interaction*, Department of Civil and Environmental Engineering, Virginia Polytechnic Institute and State University, Blacksburg, VA.

Nguyen, S.; Gibbings, D. R.; Easterling, W.S.; and Murray, T. M. (1992), *Further Studies of Composite Long–Span Joists*, Report No. CE/VPI-ST92/05, Department of Civil and Environmental Engineering, Virginia Polytechnic Institute and State University, Blacksburg, VA.

Patras, Wayne and Azizinimini, Atrod (1991), *Open Web Composite Joist Systems Utilizing Ultra-High Strength Concrete*, Masters Thesis, College of Engineering and Technology, University of Nebraska – Lincoln, NE.

Robinson, H. and Fahmy, E.H. (1978), *The Design of Partially Connected Composite Open-Web Joists*, Canadian Journal of Civil Engineering, Volume 5, pp. 611-614.

Roddenberry, Michelle; Easterling, Sam; and Murray, Tom (2000), *Strength Prediction Method for Shear Studs and Resistance Factor for Composite Beams, Volume No. II*, Department of Civil and Environmental Engineering, Virginia Polytechnic Institute and State University, Blacksburg, VA.

Roddenberry, Michelle; Easterling, Sam; and Murray, Tom (2002), *Behavior and Strength of Welded Stud Shear Connectors*, CE/VPI-ST02/04, Department of Civil and Environmental Engineering, Virginia Polytechnic Institute and State University, Blacksburg, VA.

Roddenberry, Michelle; Easterling, Sam; and Murray, Tom (2002), *Behavior and Strength of Welded Stud Shear Connectors-Data Report*, CE/VPI-ST02/05, Department of Civil and Environmental Engineering, Virginia Polytechnic Institute and State University, Blacksburg, VA.

Samuelson, David (1999) *Composite Joist Case Histories*, ASCE Structures Congress, New Orleans, LA, April 18-21.

Samuelson, David (2003) *Composite Joist Advantage*, Modern Steel Construction Magazine, September.

Samuelson, David (2002) *Composite Steel Joists*, AISC Engineering Journal, Vol. 39, No. 3, Third Quarter.

Samuelson, David (2004) SJI Updates – *Expanded Load Tables for Noncomposite Joists/ Joist Girders and Development of New Composite Joist Series*, North American Steel Construction Conference, Long Beach, CA, March 24-27.

Sublett, Charles and Easterling, Sam (1992), *Strength of Welded Headed Studs in Ribbed Metal Deck on Composite Joists*, CE/VPI-ST92/03, Department of Civil and Environmental Engineering, Virginia Polytechnic Institute and State University, Blacksburg, VA.

Tide, R.H.R. and Galambos, T.V. (1970), *Composite Open-Web Steel Joists*, AISC Engineering Journal, January, Vol. 7, No. 1.

Viest, Ivan; Colaco, Joseph; Furlong, Richard; Griffis, Lawrence; Leon, Roberto; and Wyllie Jr., Loring A. (1997), *Section 3.8 – Composite Joists and Trusses, Composite Construction Design for Buildings*, Co-published by American Society of Civil Engineers, and McGraw Hill.

SECTION 102. MATERIALS

102.1 STEEL CHORD and WEB MEMBERS

(a) Specifications

The steel used in the manufacture of **CJ**-Series joists shall conform to one of the following ASTM Specifications of latest adoption:

- Carbon Structural Steel, ASTM A36/A36M.
- High-Strength Low-Alloy Structural Steel, ASTM A242/A242M.
- Cold-Formed Welded and Seamless Carbon Steel Structural Tubing in Rounds and Shapes, ASTM A500/A500M.



- High-Strength Carbon-Manganese Steel of Structural Quality ASTM A529/A529M.
- High-Strength Low-Alloy Columbium-Vanadium Structural Steel, ASTM A572/A572M.
- High-Strength Low-Alloy Structural Steel up to 50 ksi [345 MPa] Minimum Yield Point, with Atmospheric Corrosion Resistance, ASTM A588/A588M.
- Steel, Sheet and Strip, High-Strength, Low-Alloy, Hot-Rolled and Cold-Rolled, with Improved Atmospheric Corrosion Resistance, ASTM A606/A606M.
- Structural Steel Shapes, ASTM A992/A992M.
- Steel, Sheet, Cold-Rolled, Carbon, Structural, High-Strength Low-Alloy, High-Strength Low-Alloy with Improved Formability, Solution Hardened, and Bake Hardenable, ASTM A1008/A1008M.
- Steel, Sheet and Strip, Hot-Rolled, Carbon, Structural, High-Strength Low-Alloy, High-Strength Low-Alloy with Improved Formability, and Ultra High Strength, ASTM A1011/A1011M.

or shall be of suitable quality ordered or produced to other than the listed specifications, provided that such material in the state used for final assembly and manufacture is weldable and is proved by tests performed by the producer or manufacturer to have the properties specified in Section 102.1(b).

(b) Mechanical Properties

Steel used for **CJ-Series** joists shall have a minimum yield strength determined in accordance with one of the procedures specified in this section, which is equal to the yield strength* assumed in the design.

*The term "Yield Strength" as used herein shall designate the yield level of a material as determined by the applicable method outlined in ASTM A 370, *Standard Test Methods and Definitions for Mechanical Testing of Steel Products*, paragraph 13.1 "Yield Point", and in paragraph 13.2 "Yield Strength", or as specified in Section 102.1(b) of this Specification.

Evidence that the steel furnished meets or exceeds the design yield strength shall, if requested, be provided in the form of an affidavit, or by witnessed or certified test reports.

For material used without consideration of increase in yield strength resulting from cold forming, the specimens shall be taken from as-rolled material. In the case of material with mechanical properties that conform to the requirements of one of the listed specifications, the test specimens and procedures shall conform to those of such specifications and to ASTM A370.

In the case of material with mechanical properties that do not conform to the requirements of one of the listed specifications, the test specimens and procedures shall conform to the applicable requirements of ASTM A370, and the specimens shall exhibit a yield strength equal to or exceeding the design yield strength and an elongation of not less than (a) 20 percent in 2 inches (51 mm) for sheet and strip, or (b) 18 percent in 8 inches (203 mm) for plates, shapes and bars with adjustments for thickness for plates, shapes and bars as prescribed in ASTM A36/A36M, A242/A242M, A500/A500M, A529/A529M, A572/A572M, or A588/A588M, A992/A992M whichever specification is applicable, on the basis of design yield strength.

The number of tests shall be as prescribed in ASTM A6/A6M for plates, shapes, and bars; and ASTM A606/A606M, A1008/A1008M and A1011/A1011M for sheet and strip.



If as-formed strength is utilized, the test reports shall show the results of tests performed on full section specimens in accordance with the provisions of the *AISI North American Specification for the Design of Cold-Formed Steel Structural Members*. They shall also indicate compliance with these provisions and with the following additional requirements:

- a) The yield strength calculated from the test data shall equal or exceed the design yield strength.
- b) Where tension tests are made for acceptance and control purposes, the tensile strength shall be at least 8 percent greater than the yield strength of the section.
- c) Where compression tests are used for acceptance and control purposes, the specimen shall withstand a gross shortening of 2 percent of its original length without cracking. The length of the specimen shall be not greater than 20 times its least radius of gyration.
- d) If any test specimen fails to pass the requirements of subparagraphs (a), (b), or (c) above, as applicable, two retests shall be made of specimens from the same lot. Failure of one of the retest specimens to meet such requirements shall be the cause for rejection of the lot represented by the specimens.

102.2 PAINT

Composite Steel Joists, CJ-Series, shall be provided unpainted to facilitate installation of welded shear studs.

SECTION 103. DESIGN AND MANUFACTURE

103.1 METHOD

The design of Composite Steel Joists shall be based on achieving the nominal flexural strength of the composite member and is limited to the design of one-way, composite joist systems that meet the following criteria:

- a) Members are simply-supported and are not considered part of the lateral load-resisting system.
- b) Horizontal shear connection is achieved by direct bearing of embedments within the concrete slab.

Where any applicable design feature is not specifically covered herein, the design shall be in accordance with the following specifications:

- For steel that consists of hot-rolled shapes, bars, or plates, use the American Institute of Steel Construction, *Specification for Structural Steel Buildings*.
- For members which are cold-formed from sheet or strip steel, use the American Iron and Steel Institute, *North American Specification for the Design of Cold-Formed Steel Structural Members*.

103.2 LOADS, FORCES AND LOAD COMBINATIONS

The loads and forces used for the composite steel joist design shall be calculated by the **specifying professional** in accordance with the applicable building code and specified and provided on the contract drawings.

The load combinations shall be specified by the **specifying professional** on the contract drawings in accordance with the applicable building code or, in the absence of a building code, the load combinations shall be those stipulated in SEI/ASCE 7 Section 2.3 for LRFD design.



At a minimum, the required stress shall be computed for the factored loads based on the factors and load combinations as follows:

(a) Non-composite

$$1.4D_c \quad (103.2-1)$$

$$1.2D_c + 1.6L_c \quad (103.2-2)$$

Where:

D_c = construction dead load due to weight of the joist, the decking, and the fresh concrete, lb/ft.² (kPa)

L_c = construction live load due to the work crews and the construction equipment, lb/ft.² (kPa)

(b) Composite

$$1.4D \quad (103.2-3)$$

$$1.2D + 1.6 (L, \text{ or } L_r, \text{ or } S, \text{ or } R) \quad (103.2-4)$$

Where:

D = dead load due to the weight of the structural elements and the permanent features of the structure, lb/ft.² (kPa)

L = live load due to occupancy and movable equipment, lb/ft.² (kPa)

L_r = roof live load, when composite joists are utilized in roofs, lb/ft.² (kPa)

S = snow load, when composite joists are utilized in roofs, lb/ft.² (kPa)

R = load due to initial rainwater or ice exclusive of the ponding contribution, when composite joists are utilized in roofs, lb/ft.² (kPa)

103.3 NOMINAL STRESSES

Joists shall have their components so proportioned that the required stresses, f_u , shall not exceed ϕF_n where:

f_u = required stress computed for the factored loads based on the factors and load combinations, ksi (MPa)
 combinations, ksi (MPa)

ϕ = resistance factor

F_n = nominal stress, ksi (MPa)

ϕF_n = design stress, ksi (MPa)

F_y = specified minimum yield stress, ksi (MPa)

E = modulus of elasticity of steel, ksi (MPa)

For Chords: The calculation of design stress shall be based on a yield strength, F_y , of the material used in manufacturing equal to 50 ksi (345 MPa).

For all other joist elements: The calculation of design stress shall be based on a yield strength, F_y , of the material used in manufacturing, but shall not be less than 36 ksi (250 MPa) or greater than 50 ksi (345 MPa).

Note: Yield strengths greater than 50 ksi shall not be used for the design of any joist members.



(a) **Tension:** $\phi_t = 0.90$

$$F_n = F_y \quad (103.3-1)$$

$$\phi F_n = \phi_t F_y \quad (103.3-2)$$

(b) **Compression:** $\phi_c = 0.90$

$$F_n = F_{cr} \quad (103.3-3)$$

$$\phi F_n = \phi_c F_{cr} \quad (103.3-4)$$

For members with

$$K\ell/r \leq 4.71\sqrt{E/QF_y}$$

$$F_{cr} = Q \left[0.658 \left(\frac{QF_y}{F_e} \right) \right] F_y \quad (103.3-5)$$

For members with

$$K\ell/r > 4.71\sqrt{E/QF_y}$$

$$F_{cr} = 0.877F_e \quad (103.3-6)$$

Where:

F_e = elastic buckling stress determined in accordance with Equation 103.3-7.

$$F_e = \frac{\pi^2 E}{\left(\frac{K\ell}{r} \right)^2} \quad (103.3-7)$$

In the above equations, ℓ is taken as the distance in inches (millimeters) between panel points for the chord members and web members, and r is the corresponding least radius of gyration of the member or any component thereof. E is equal to 29,000 ksi (200,000 MPa).

For hot-rolled sections and cold formed angles, Q is the full reduction factor for slender compression members as defined in the AISC *Specification for Structural Steel Buildings*, except that when the first primary compression web member is a crimped-end angle member, whether hot-rolled or cold formed:

$$Q = [5.25/(w/t)] + t \leq 1.0 \quad (103.3-8)$$

Where: w = angle leg length, inches
 t = angle leg thickness, inches

or,

$$Q = [5.25/(w/t)] + (t/25.4) \leq 1.0 \quad (103.3-9)$$

Where: w = angle leg length, mm
 t = angle leg thickness, mm

For all other cold-formed sections the method of calculating the nominal compressive strength is given in the AISI, *North American Specification for the Design of Cold-Formed Steel Structural Members*.

(c) Bending: $\phi_b = 0.90$

Bending calculations are to be based on using the elastic section modulus.

For chords and web members other than solid rounds:

$$F_n = F_y \quad (103.3-10)$$

$$\phi F_n = \phi_b F_y \quad (103.3-11)$$

For web members of solid round cross section:

$$F_n = 1.6 F_y \quad (103.3-12)$$

$$\phi F_n = \phi_b (1.6 F_y) \quad (103.3-13)$$

For bearing plates used in joist seats:

$$F_n = 1.5 F_y \quad (103.3-14)$$

$$\phi F_n = \phi_b (1.5 F_y) \quad (103.3-15)$$

(d) Weld Design Strength:

Shear at throat of fillet welds, flare bevel groove welds, partial joint penetration groove welds, and plug/slot welds:

$$\text{Nominal Shear Stress} = F_{nw} = 0.6F_{exx} \quad (103.3-16)$$

$$\phi_w = 0.75$$

$$\text{Design Shear Strength} = \phi R_n = \phi_w F_{nw} A = 0.45F_{exx} A_w \quad (103.3-17)$$

Made with E70 series electrodes or F7XX-EXXX flux-electrode combinations $F_{exx} = 70$ ksi (483 MPa)

Made with E60 series electrodes or F6XX-EXXX flux-electrode combinations $F_{exx} = 60$ ksi (414 MPa)

A_w = effective throat area, where:

For fillet welds, A_w = effective throat area, (other design methods demonstrated to provide sufficient strength by testing shall be permitted to be used);

For flare bevel groove welds, the effective weld area is based on a weld throat width, T, where:

$$T \text{ (inches)} = 0.12D + 0.11 \quad (103.3-18)$$

Where: D = web diameter, inches

or,

$$T \text{ (mm)} = 0.12D + 2.8 \quad (103.3-19)$$

Where: D = web diameter, mm

For plug/slot welds, A_w = cross-sectional area of the hole or slot in the plane of the faying surface provided that the hole or slot meets the requirements of the American Institute of Steel Construction *Specification for Structural Steel Buildings* (and as described in SJI Technical Digest No. 8, "Welding of Open-Web Steel Joists and Joist Girders").

Strength of resistance welds and complete-joint-penetration groove or butt welds in tension or compression (only when the stress is normal to the weld axis) is equal to the base metal strength:

$$\phi_t = \phi_c = 0.90$$

$$\text{Design Stress} = 0.90 F_y \quad (103.3-20)$$

103.4 MAXIMUM SLENDERNESS RATIOS

The slenderness ratios, $1.0\ell/r$ and $1.0\ell_s/r$ of members as a whole or any component part shall not exceed the values given in Table 103.4-1, Parts A.

The effective slenderness ratio, $k\ell/r$ to be used in calculating the nominal stresses, F_{cr} and F'_e , is the largest value as determined from Table 103.4-1, Parts B and C.

In compression members when fillers or ties are used, they shall be spaced so that the ℓ_s/r_z ratio of each component does not exceed the governing ℓ/r ratio of the member as a whole. The terms used in Table 103.4-1 are defined as follows:

- ℓ = length center-to-center of panel points, except $\ell = 36$ inches (914 mm) for calculating ℓ/r_y of top chord member, in. (mm).
- ℓ_s = maximum length center-to-center between panel point and filler (tie), or between adjacent fillers (ties), in. (mm).
- r_x = member radius of gyration in the plane of the joist, in. (mm).
- r_y = member radius of gyration out of the plane of the joist, in. (mm).
- r_z = least radius of gyration of a member component, in. (mm).

Compression web members are those web members subject to compressive axial loads under gravity loading.

Tension web members are those web members subject to tension axial loads under gravity loading, and which may be subject to compressive axial loads under alternate loading conditions, such as net uplift.

For top chords, the end panel(s) are the panels between the bearing seat and the first primary interior panel point comprised of at least two intersecting web members.

**TABLE 103.4-1
MAXIMUM AND EFFECTIVE SLENDERNESS RATIOS**

Description	kℓ/r _x	kℓ/r _y	kℓ/r _z	kℓ _s /r _z	
I TOP CHORD INTERIOR PANELS					
A.	The slenderness ratios, 1.0ℓ/r and 1.0ℓ _s /r, of members as a whole or any component part shall not exceed 90.				
B.	The effective slenderness ratio, kℓ/r, to determine F _{cr} where k is:				
1.	With fillers or ties	0.75	0.94	---	1.0
2.	Without fillers or ties	---	---	0.75	---
3.	Single component members	0.75	0.94	---	---
C.	For bending, the effective slenderness ratio, kℓ/r, to determine F' _e where k is:				
		0.75	---	---	---
II TOP CHORD END PANELS, ALL BOTTOM CHORD PANELS					
A.	The slenderness ratios, 1.0ℓ/r and 1.0ℓ _s /r, of members as a whole or any component part shall not exceed 120 for Top Chords, or 240 for Bottom Chords.				
B.	The effective slenderness ratio, kℓ/r, to determine F _{cr} where k is:				
1.	With fillers or ties	1.0	0.94	---	1.0
2.	Without fillers or ties	---	---	1.0	---
3.	Single component members	1.0	0.94	---	---
C.	For bending, the effective slenderness ratio, kℓ/r, to determine F' _e where k is:				
		1.0	---	---	---
III TENSION WEB MEMBERS					
A.	The slenderness ratios, 1.0ℓ/r and 1.0ℓ _s /r, of members as a whole or any component part shall not exceed 240.				
B.	For end web members subject to compression, the effective slenderness ratio, kℓ/r, to determine F _{cr} where k is:				
1.	With fillers or ties	0.75	1.0	---	1.0
2.	Without fillers or ties	---	---	1.0	---
3.	Single component members	0.75	0.8	---	---
IV COMPRESSION WEB MEMBERS					
A.	The slenderness ratios, 1.0 and 1.0ℓ _s /r, of members as a whole or any component part shall not exceed 200.				
B.	The effective slenderness ratio, kℓ/r, to determine F _{cr} where k is:				
1.	With fillers or ties	0.75	1.0	---	1.0
2.	Without fillers or ties	---	---	1.0	---
3.	Single component members	0.75	1.0	---	---

103.5 MEMBERS

(a) Chords

(1) Non-composite Design

The bottom chord shall be designed as an axially loaded tension member.

The top chord shall resist the construction loads, at which time the joist is behaving non-compositely. An analysis shall be made using an effective depth of the joist to determine the member forces due to construction loads. The effective depth for a non-composite joist shall be considered the vertical distance between the centroids of the top and bottom chord members.

The minimum horizontal flat leg width and minimum thickness of top chord shall be as specified in Table 103.5-1.

**TABLE 103.5-1
MINIMUM TOP CHORD SIZES FOR INSTALLING WELDED SHEAR STUDS**

Shear Stud Diameter, in. (mm)	Minimum Horizontal Flat Leg Width, in. (mm)	Minimum Leg Thickness, in. (mm)
0.375 (10)	1.50 (38)	0.125 (3.2)
0.500 (13)	1.75 (44)	0.167 (4.2)
0.625 (16)	2.00 (51)	0.209 (5.3)
0.750 (19)	2.50 (64)	0.250 (6.3)

The top chord shall be designed as a continuous member subject to combined axial and bending stresses and shall be so proportioned that

at the panel point: $f_{au} + f_{bu} \leq 0.9F_y$ (103.5-1)

at the mid panel:

$$\text{for, } \frac{f_{au}}{\phi_c F_{cr}} \geq 0.2, \quad \frac{f_{au}}{\phi_c F_{cr}} + \frac{8}{9} \left[\frac{C_m f_{bu}}{\left[1 - \left(\frac{f_{au}}{\phi_c F'_e} \right) \right] Q \phi_b F_y} \right] \leq 1.0 \quad (103.5-2)$$

$$\text{for, } \frac{f_{au}}{\phi_c F_{cr}} < 0.2, \quad \left(\frac{f_{au}}{2\phi_c F_{cr}} \right) + \left[\frac{C_m f_{bu}}{\left[1 - \left(\frac{f_{au}}{\phi_c F'_e} \right) \right] Q \phi_b F_y} \right] \leq 1.0 \quad 103.5-3$$

Where:

- f_{au} = P_u/A_t = required compressive stress, ksi (MPa)
- P_u = required axial strength using LRFD load combinations, kips (N)
- f_{bu} = M_u/S = required bending stress at the location under consideration, ksi (MPa)
- M_u = required flexural strength using LRFD load combinations, kip-in. (N-mm)



- S = elastic section modulus, in.³ (mm³)
 F_{cr} = nominal axial compressive stress in ksi (MPa) based on ℓ/r as defined in Section 103.4
 $C_m = 1 - 0.3 f_{au} / \phi_c F'_e$ for end panels
 $C_m = 1 - 0.4 f_{au} / \phi_c F'_e$ for interior panels
 F_y = specified minimum yield strength, ksi (MPa)
 $F'_e = \frac{\pi^2 E}{(K\ell/r_x)^2}$, ksi (MPa)
 ℓ = chord panel length per Section 103.4, in. (mm)
 r_x = radius of gyration about the axis of bending, in. (mm)
 Q = form factor defined in Section 103.3
 A_t = area of the top chord, in.², (mm²)

The top chord shall be considered as stayed laterally by the floor provided the requirements of Section 104.9(d) of these specifications are met.

The top chord and bottom chord shall be designed such that at each joint:

$$f_{vmod} \leq \phi_v f_n \quad (\text{LRFD, } \phi = 1.00) \quad (103.5-4)$$

Where:

- f_n = nominal shear stress = $0.6F_y$, ksi (MPa)
 f_t = axial stress = P/A , ksi (MPa)
 f_v = shear stress = V/bt , ksi (MPa)
 $f_{vmod} = \text{modified shear stress} = \left(\frac{1}{2}\right)(f_t^2 + 4f_v^2)^{1/2}$
 b = length of vertical part(s) of cross section, in. (mm)
 t = thickness of vertical part(s) of cross section, in. (mm)

It shall not be necessary to design the top chord and bottom chord for the modified shear stress when a round bar web member is continuous through a joint. The minimum required shear of Section 103.5(b) (25 percent of the end reaction) shall not be required when evaluating Equation 103.5-4.

(2) Composite Design

The distance between the centroid of the tension bottom chord and the centroid of the concrete compression block, d_e , shall be computed using a concrete stress of $0.85f'_c$ and an effective concrete width, b_e , taken as the sum of the effective widths for each side of the joist centerline, each of which shall be the lowest value of the following:

1. one-eighth of the joist span, center-to-center of supports;
2. one-half the distance to the center-line of the adjacent joist;
3. the distance to the edge of the slab.

$$A = M_n / (0.85 f'_c b_e d_e) \leq t_c, \text{ in. (mm)} \quad (103.5-5)$$

$$d_e = d_j - y_{bc} + h_{deck} + t_c - a/2, \text{ in. (mm)} \quad (103.5-6)$$

Where:

- A = depth of concrete compressive stress block, in. (mm)
- b_e = effective width of concrete slab over the joist, in. (mm)
- d_j = steel joist depth, in. (mm)
- f_c = specified minimum 28 day concrete compressive strength, ksi (MPa)
- h_{deck} = height of metal deck, in. (mm)
- M_n = nominal moment capacity of the composite joist, kip-in. (N-mm)
- t_c = thickness of concrete slab above the steel deck, in. (mm)
- y_{bc} = vertical distance to centroidal axis of bottom chord measured from the bottom of the bottom chord, in. (mm)

When the metal deck ribs are perpendicular to the steel joists, the concrete below the top of the metal deck shall be neglected when determining section properties and in calculating the concrete compressive block.

The contribution of the steel joist top chord to the moment capacity of the composite system shall be ignored. The first top chord end panel member shall be designed for the full factored load requirements as a non-composite member per Section 103.5(a)(1).

$$M_u \leq \phi M_n \quad (103.5-7)$$

ϕM_n = minimum design flexural strength of composite section as determined from Equations 103.5-8, 103.5-9, 103.5-10, and 103.5-11, kip-in. (N-mm)

M_u = required flexural strength determined from applied factored loads, kip-in. (N-mm)

The design flexural strength of the composite section, ϕM_n , shall be computed as the lowest value of the following limit states:

a) Bottom Chord Tensile Yielding: $\phi_t = 0.90$

$$\phi M_n = \phi_t A_b F_y d_e \quad (103.5-8)$$

b) Bottom Chord Tensile Rupture: $\phi_{tr} = 0.75$

$$\phi M_n = \phi_{tr} A_n F_u d_e \quad (103.5-9)$$

c) Concrete Crushing: $\phi_{cc} = 0.85$

$$\phi M_n = \phi_{cc} 0.85 f'_c b_e t_c d_e \quad (103.5-10)$$

d) Shear Connector Strength: $\phi_{stud} = 0.90$

$$\phi M_n = \phi_{stud} N Q_n d_e \geq 0.50 \phi_t A_b F_y d_e \quad (103.5-11)$$



Where:

- A_b = cross-sectional area of steel joist bottom chord, in.² (mm²)
- A_n = net cross-sectional area of the steel joist bottom chord, in.² (mm²)
- b_e = effective width of concrete slab over the joist, in. (mm)
- d_e = vertical distance from the centroid of steel joist bottom chord to the centroid of resistance of the concrete in compression, in.(mm)
- F_u = tensile strength of the steel joist bottom chord, ksi (MPa)
- F_y = specified minimum yield stress of steel joist bottom chord, ksi (MPa)
- N = number of shear studs between the point of maximum moment and zero moment
- t_c = minimum thickness of the concrete slab above the top of the metal deck, in. (mm)

(b) Webs

Vertical shears to be used in the design of the web members shall be determined from the controlling load combination from Section 103.2(b), but such vertical shears shall not be less than the following:

- i. 25% of the factored end reaction.
- ii. Tension web members controlled by (i) shall be designed for a compressive force resulting from a factored shear value of:

$$V_{c\min} = \frac{(1.6w_L)L}{8} \quad (103.5-12)$$

Where:

- w_L = non-factored live load due to occupancy and moveable equipment, plf (kN/m)
- L = design length for the composite joist as defined in Table 104.2-1, Definition of Span, ft. (m) where design length = Span – 0.33 ft. (Span – 102 mm)
- $V_{c\min}$ = minimum factored compressive design shear in tension web members, lb (kN)

Interior vertical web members used in modified Warren type web systems shall be designed to resist the gravity loads supported by the member plus 2.0 percent of the composite bottom chord axial force.

Maximum slenderness ratios shall be in accordance with Sections III and IV of Table 103.4-1.

(c) Chord Configuration

Composite joists shall have parallel chords.

(d) Eccentricity

Members connected at a joint shall have their centers of gravity lines meet at a point, if practical. Eccentricity on either side of the neutral axis of chord members shall be permitted to be neglected when it does not exceed the distance between the neutral axis and the back of the chord. Otherwise, provision shall be made for the stresses due to eccentricity.

Eccentricity between the intersection of the centroid of the web members and center of compression in the concrete slab shall be permitted to be neglected. Ends of joists shall be proportioned to resist bending produced by eccentricity at the support.

In those cases where a single angle compression member is attached to the outside of the stem of a tee or double angle chord, due consideration shall be given to eccentricity.

(e) Joist Extensions

Joist extensions are defined as one of three types, top chord extensions (TCX), extended ends, or full depth cantilevers.

Design criteria for joist extensions shall be specified using one of the following methods:

- (1) A joist extension shall be designed for the load based on the design length and designation of the specified composite steel joist. In the absence of other design information, the joist manufacturer shall design the joist extension for this loading as a default.
- (2) A loading diagram shall be provided for the joist extension. The diagram shall include the magnitude and location of the loads to be supported, as well as the appropriate load combinations.

Any deflection requirements or limits due to the accompanying loads and load combinations on the joist extension shall be provided by the **specifying professional**, regardless of the method used to specify the extension. Unless otherwise specified, the joist manufacturer shall check the extension for the specified deflection limit under uniform live load acting simultaneously on both the joist base span and the extension.

The joist manufacturer shall consider the effects of joist extension loading on the base span of the joist. This includes carrying the design bending moment due to the loading on the extension into the top chord end panel(s), and the effect on the overall joist chord and web axial forces. The joist extension shall support all end loads without relying on any composite action.

Bracing of joist extensions shall be clearly indicated on the structural drawings.

Design of concrete reinforcing steel in the negative moment region shall be the responsibility of the **specifying professional**.

(f) Joist Bearing Depths

The joist bearing depths shall range from 2 1/2 inches (64 mm) to 7 1/2 inches (191 mm).

103.6 CONNECTIONS

(a) Methods

Joint connections and splices shall be made by attaching the members to one another by arc or resistance welding or other accredited methods.

- (1) Welded Connections
 - a) Selected welds shall be inspected visually by the manufacturer. Prior to this inspection, weld slag shall be removed.
 - b) Cracks are not acceptable and shall be repaired.
 - c) Thorough fusion shall exist between layers of weld metal and base metal for the required design length of the weld; such fusion shall be verified by visual inspection.
 - d) Unfilled weld craters shall not be included in the design length of the weld.
 - e) Undercut shall not exceed 1/16 inch (2 mm) for welds oriented parallel to the principal stress.
 - f) The sum of surface (piping) porosity diameters shall not exceed 1/16 inch (2 mm) in any 1 inch (25 mm) of design weld length.
 - g) Weld splatter is acceptable.



(2) **Welded Connections for Crimped-End Angle Web Members**

The connection of each end of a crimped angle web member to each side of the chord shall consist of a weld group made of more than a single line of weld. The design weld length shall include, at minimum, an end return of two times the nominal weld size.

(3) **Welding Program**

Manufacturers shall have a program for establishing weld procedures and operator qualification and for weld sampling and testing. (See Steel Joist Institute Technical Digest 8 - Welding of Open Web Steel Joists and Joist Girders.)

(4) **Weld inspection by Outside Agencies (See Section 104.13 of this specification).**

The agency shall arrange for visual inspection to determine that welds meet the acceptance standards of Section 103.6(a)(1) above. Ultrasonic, X-Ray, and magnetic particle testing are inappropriate for joists due to the configurations of the components and welds.

(b) Strength

(1) **Joint Connections** - Joint connections shall develop the maximum force due to any of the design loads, but not less than 50 percent of the nominal strength of the member in tension or compression, whichever force is the controlling factor in the selection of the member.

(2) **Shop Splices** - Shop splices shall be permitted to occur at any point in chord or web members. Splices shall be designed for the member force, but not less than 50 percent of the nominal member strength. All component parts comprising the cross section of the chord or web member (including reinforcing plates, rods, etc....) at the point of the splice, shall develop an ultimate tensile force of at least 1.2 times the product of the yield strength and the full design area of the chord or web. The "full design area" is the minimum required area such that the required stress will be less than the design stress.

(c) Field Splices

Field splices shall be designed by the manufacturer and shall be permitted to be either bolted or welded. Splices shall be designed for the member force, but not less than 50 percent of the nominal member strength.

(d) Shear Studs

Shear studs, after installation, shall extend not less than 1 1/2 in. (38 mm) above the top of the steel deck and there shall be at least 1/2 in. (13 mm) of concrete cover above the top of the installed studs.

For studs in 1.5 in. (38 mm), 2 in. (51 mm), or 3 in. (76 mm) deep decks with $d_{stud}/t_{top\ chord} \leq 2.7$:

$$Q_n = \text{Min} \left[0.5A_{stud} \sqrt{f'_c E_c} , R_p R_g A_{stud} F_{u\ stud} \right] \text{ (kips)} \quad (103.6-1)$$

$$Q_n = \text{Min} \left[0.5A_{stud} \sqrt{f'_c E_c} , (R_p R_g A_{stud} F_{u\ stud} / 1000) \right] \text{ (kN)} \quad (103.6-2)$$

For studs in 1.5 in. (38 mm), 2 in. (51 mm), or 3 in. (76 mm) deep decks with $2.7 < d_{stud}/t_{top\ chord} \leq 3.0$:

$$Q_n = \text{Min} \left[0.5A_{stud} \sqrt{f'_c E_c} , R_p R_g A_{stud} F_{u\ stud} - 1.5 \left(\frac{d_{stud}}{t_{top\ chord}} - 2.7 \right) \right] \text{ (kips)} \quad (103.6-3)$$



$$Q_n = \text{Min} \left[0.5A_{\text{stud}} \sqrt{f'_c E_c} , (R_p R_g A_{\text{stud}} F_{u \text{ stud}} / 1000) - 6.67 \left(\frac{d_{\text{stud}}}{t_{\text{top chord}}} - 2.7 \right) \right] (\text{kN}) \quad (103.6-4)$$

Where:

- A_{stud} = cross-sectional area of shear stud, in.² (mm²)
- d_{stud} = diameter of shear stud, in. (mm)
- E_c = modulus of elasticity of the concrete, ksi (MPa)
- f'_c = specified minimum 28 day concrete compressive strength, ksi (MPa)
- $F_{u \text{ stud}}$ = minimum tensile strength of stud, 65 ksi (450 MPa)
- Q_n = shear capacity of a single shear stud, kips (kN)
- R_p = shear stud coefficient from Table 103.6-1

- R_g = 1.00 for one stud per rib or staggered position studs
 = 0.85 for two studs per rib side-by-side
 = 0.70 for three studs per rib side-by-side
- $t_{\text{top chord}}$ = thickness of top chord horizontal leg or flange, in. (mm)

**TABLE 103.6-1
VALUES FOR R_p**

Deck Height	W_r @ mid-height	3/8 in. (10 mm) Dia. Stud	1/2 in. (13 mm) Dia. Stud	5/8 in. (16 mm) Dia. Stud	3/4 in. (19 mm) Dia. Stud
1 in. (25 mm)	1.9 in. (48 mm)	0.55	0.55	0.50	0.45
1.5 in. (38 mm)	2.1 in. (53 mm)	0.55	0.50	0.45	0.40
1.5 in. (38 mm) Inverted	3.9 in. (99 mm)	0.85	0.60	0.60	0.60
2 in. (51 mm)	6 in. (152 mm)	---	0.55	0.50	0.45
3 in. (76 mm)	6 in. (152 mm)	---	0.50	0.50	0.50

- Notes: 1) W_r @ mid-height = Average deck rib width of deck rib containing the shear stud.
 2) The deck is assumed to be oriented perpendicular to the joists.

103.7 CAMBER

CJ-Series joists shall be cambered. The approximate camber shall be based on the deflection associated with 100% of the non-composite unfactored dead load plus any additional loads defined by the **specifying professional**.

103.8 VERIFICATION OF DESIGN AND MANUFACTURE

(a) Design Calculations

Companies manufacturing any **CJ-Series Joists** shall submit design data to the Steel Joist Institute (or an independent agency approved by the Steel Joist Institute) for verification of compliance with the SJI Specifications.

(b) In-Plant Inspections



Each manufacturer shall verify his ability to manufacture **CJ-Series Joists** through periodic In-Plant Inspections. Inspections shall be performed by an independent agency approved by the Steel Joist Institute. The frequency, manner of inspection and manner of reporting shall be determined by the Steel Joist Institute. The Plant inspections are not a guarantee of the quality of any specific joists; this responsibility lies fully and solely with the individual manufacturer.

SECTION 104. APPLICATION

104.1 USAGE

The specifications shall apply to any type of structure where floor and roof decks are to be supported directly by Composite Steel Joists installed as hereinafter specified. Joists used other than for simple spans as prescribed in Section 103.1 shall be investigated and modified as necessary by the **specifying professional** to limit the unit stresses to those listed in Section 103.3. Design for large openings that interrupt truss action is beyond the scope of this specification.

CAUTION: If a rigid connection of the bottom chord is to be made to the column or other support, it shall be made only after the application of the non-composite dead loads. The joist is no longer simply-supported and the system shall be investigated for continuous frame action by the **specifying professional**.

The designed detail of a rigid type connection and moment plates shall be shown on the structural drawings by the **specifying professional**. The moment plates shall be furnished by other than the joist manufacturer.

104.2 SPAN

The span of a standard SJI composite joist shall be from 12 to 30 times the depth of the steel joist. The term "Span" is defined in Table 104.2-1, Definition of Span.

104.3 DEPTH

The depth of the composite joist shall be the vertical distance from the top of the steel top chord to the bottom of the bottom chord.

104.4 END SUPPORTS

(a) Masonry and Concrete

CJ-Series Joists supported by masonry or concrete shall bear on steel bearing plates and shall be designed as steel bearing. Due consideration of the end reactions and all other vertical and lateral forces shall be taken by the **specifying professional** in the design of the steel bearing plate and the masonry or concrete. The ends of **CJ-Series Joists** shall extend over the masonry or concrete support as shown below and be anchored to a steel bearing plate. This steel bearing plate shall be located no more than 1/2 inch (13 mm) from the face of the wall. The distance over the wall that the composite joist shall bear, width of the steel bearing plate and anchorage of the **CJ-Series Joists** shall be as defined below:

For $2\ 1/2" \leq \text{Seat Depth} < 5"$:

- The ends of **CJ-Series Joists** shall extend a distance of not less than 4 inches (102 mm) over the masonry or concrete support and be anchored to the steel bearing plate.
- The width of the plate perpendicular to the span of the Composite Steel Joist shall be not less than 6 inches (152 mm).
- The Composite Steel Joists shall bear a minimum of 2 1/2 inches (64 mm) on the steel bearing plate.

For Seat Depth ≥ 5 ":

- The ends of **CJ-Series Joists** shall extend a distance of not less than 6 inches (152 mm) over the masonry or concrete support and be anchored to the steel bearing plate.
- The width of the plate perpendicular to the span of the Composite Steel Joist shall be not less than 9 inches (229 mm).
- The Composite Steel Joists shall bear a minimum of 4 inches (102 mm) on the steel bearing plate.

The steel bearing plate is to be designed by the **specifying professional** and shall be furnished by other than the joist manufacturer.

Where it is deemed necessary to bear less than the dimensions listed above over the masonry or concrete support, special consideration is to be given to the design of the steel bearing plate and the masonry or concrete by the **specifying professional**. The joist shall meet the minimum bearing requirement on the steel bearing plate.

(b) Steel

Due consideration of the end reactions and all other vertical and lateral forces shall be taken by the **specifying professional** in the design of the steel support.

For $2\ 1/2" \leq$ Seat Depth < 5 ":

The ends of **CJ-Series Joists** shall extend a distance of not less than 2 1/2 inches (64 mm) over the steel supports.

For Seat Depth ≥ 5 ":

The ends of **CJ-Series Joists** shall extend a distance of not less than 4 inches (102 mm) over the steel supports.

Where deemed necessary to butt opposite joists over a narrow steel support with bearing less than that noted above, special ends shall be specified, and such ends shall have positive attachment to the support, either by bolting or welding.

104.5 BRIDGING

Top and bottom chord bridging is required and shall consist of one or both of the following types:

(a) Horizontal

Horizontal bridging lines shall consist of continuous horizontal steel members. The ℓ/r ratio of the bridging member shall not exceed 300, where ℓ is the distance in inches (millimeters) between attachments and r is the least radius of gyration of the bridging member.

(b) Diagonal

Diagonal bridging lines shall consist of cross-bracing with a ℓ/r ratio of not more than 200, where ℓ is the distance in inches (millimeters) between connections and r is the least radius of gyration of the bracing member. Where cross-bracing members are connected at their point of intersection, the ℓ distance shall be taken as the distance in inches (millimeters) between connections at the point of intersection of the bridging members and the connections to the chords of the joists.



(c) Bridging Lines

For spans up through 60 feet (18.3 meters), welded horizontal bridging shall be permitted to be used except where the row of bridging nearest the center is required to be bolted diagonal bridging as indicated on the joist manufacturer's joist placement plans. When the span of the composite steel joist is over 60 feet (18.3 meters), but not greater than 100 feet (30.5 meters), hoisting cables shall not be released until the two rows of bridging nearest the third points are completely installed. When the span exceeds 100 feet (30.5 meters) hoisting cables shall not be released until all rows of bridging are completely installed. For spans over 60 feet (18.3 meters) all rows of bridging shall be diagonal bridging with bolted connections at the chords and intersections.

(d) Spacing

Bridging shall be properly spaced and anchored to support the decking and the employees prior to the attachment of the deck to the top chord. The maximum spacing of lines of bridging, ℓ_{brmax} shall be the lesser of,

$$\ell_{brmax} = \left(100 + 0.67 d_j + 40 \frac{d_j}{L} \right) r_y, \text{ in.} \quad (104.5-1a)$$

$$\ell_{brmax} = \left(100 + 0.026 d_j + 0.48 \frac{d_j}{L} \right) r_y, \text{ mm} \quad (104.5-1b)$$

Or,

$$\ell_{brmax} = 170 r_y \quad (104.5-2)$$

Where:

d_j is the steel joist depth, in. (mm)

L is the design length for the composite joist, ft. (m)

r_y is the out-of-plane radius of gyration of the top chord, in. (mm)

The number of rows of bottom chord bridging shall not be less than the number of top chord rows. Rows of bottom chord bridging are permitted to be spaced independently of rows of top chord bridging.

(e) Connections

Connection of bridging to the chords of the Composite Steel Joists shall be made by positive mechanical means or by welding. Ends of all bridging lines terminating at walls, beams, or double joists boxed by diagonal bridging shall be anchored.

Connection of the horizontal and diagonal bridging to the joist chord or bridging terminus point shall be capable of resisting the nominal top chord horizontal force, P_{br} given in Equation 104.5-3.

$$P_{br} = 0.0025 n A_t F_{construction}, \text{ lbs (N)} \quad (104.5-3)$$

Where

$n = 8$ for horizontal bridging

$n = 2$ for diagonal bridging

$A_t =$ cross sectional area of joist top chord, in.² (mm²)

$F_{construction} =$ assumed ultimate stress in top chord to resist construction loads



$$F_{\text{construction}} = \left(\frac{\pi^2 E}{\left(\frac{0.9 \ell_{\text{brmax}}}{r_y} \right)^2} \right) \geq 12.2 \text{ ksi} \quad (104.5-4a)$$

$$F_{\text{construction}} = \left(\frac{\pi^2 E}{\left(\frac{0.9 \ell_{\text{brmax}}}{r_y} \right)^2} \right) \geq 84.1 \text{ MPa} \quad (104.5-4b)$$

Where:

E = Modulus of Elasticity of steel = 29,000 ksi (200,000 MPa)

and $\frac{\ell_{\text{brmax}}}{r_y}$ is determined from Equations 104.5-1a, 104.5-1b or 104.5-2

(f) Sizing of Bridging

Horizontal and diagonal joist bridging shall be designed to resist the nominal unfactored horizontal compressive force given by Equation 104.5-3.

(g) Bottom Chord Bearing Joists

Where bottom chord bearing joists are utilized, a row of diagonal bridging shall be provided near the support(s). This bridging shall be installed and anchored before the hoisting cable(s) is released.

104.6 INSTALLATION OF BRIDGING

Bridging shall be provided to support the top chord during installation of the decking prior to the attachment of the deck to the top chord. All bridging and bridging anchors shall be completely installed before construction loads are placed on the joists. Bridging shall support the top and bottom chords against lateral movement during the construction period and shall hold the steel joists in the approximate position as shown on the joist placement plans.

104.7 BEARING SEAT ATTACHMENTS

(a) Masonry and Concrete

Ends of Composite Steel Joists resting on steel bearing plates on masonry or structural concrete shall be attached thereto as defined below:

For $2 \frac{1}{2}'' \leq \text{Seat Depth} < 5''$:

With a minimum of two 1/8 inch (3 mm) fillet welds 2 inches (51 mm) long, or with two 1/2 inch (13 mm) ASTM A307 bolts, or with the equivalent.

For Seat Depth $\geq 5''$:

With a minimum of two 1/4 inch (6 mm) fillet welds 2 inches (51 mm) long, or with two 3/4 inch (19 mm) ASTM A307 bolts or the equivalent.



(b) Steel

Ends of Composite Steel Joists resting on steel supports shall be attached thereto as defined below:

For $2\ 1/2'' \leq \text{Seat Depth} < 5''$:

With a minimum of two 1/8 inch (3 mm) fillet welds 2 inches (51 mm) long, or with two 1/2 inch (13 mm) ASTM A307 bolts, or with the equivalent.

For Seat Depth $\geq 5''$:

With a minimum of two 1/4 inch (6 mm) fillet welds 2 inches (51 mm) long, or with two 3/4 inch (19 mm) ASTM A307 bolts or the equivalent.

In steel frames, where columns are not framed in at least two directions with solid structural steel members, joists at column lines shall be field bolted and the joist bottom chords shall be restrained by a vertical stabilizer plate attached to the column providing lateral stability during construction. Where constructability does not allow a steel joist to be installed directly at the column, an alternate means of stabilizing the joist shall be installed on both sides near the column (OSHA 2001). When **CJ-Series Joists** are used to provide lateral stability to the supporting member, the final connection shall be made by welding or as designated by the **specifying professional**.

(c) Uplift

Where uplift forces are a design consideration, composite joists used in roof applications shall be anchored to resist such forces (Refer to Section 104.12).

104.8 JOIST SPACING

Composite joists shall be spaced so that the loading on each joist does not exceed the design load.

104.9 DECKS

(a) Material

Floor deck shall consist of formed steel capable of supporting the required load at the specified joist spacing.

(b) Thickness

Cast-in-place slabs shall be not less than 2 inches (51 mm) thick above the deck.

(c) Bearing

Slabs or decks shall bear uniformly along the top chords of the joists.

(d) Attachments of the steel deck

The deck shall be attached per Steel Deck Institute requirements (ANSI/SDI C1.0-2006, Standard for Composite Steel Floor Deck and ANSI/SDI NC-2010, Standard for Noncomposite Steel Floor Deck) prior to placing construction loads on the composite joists. The spacing of the attachments along the top chord shall not exceed 36 inches (914 mm).

104.10 DEFLECTION

The deflection due to the design live load shall not exceed the following:

Floors: 1/360 of span.

Roofs: 1/360 of span where a plaster ceiling is attached or suspended.

1/240 of span for all other cases.



The **specifying professional** shall give due consideration to the effects of deflection, both short and long term, and vibration* in the selection of composite joists. All deflection calculations shall account for the inherent flexibility of the open web configuration.

*For further reference, refer to Steel Joist Institute Technical Digest #5, "Vibration of Steel Joist-Concrete Slab Floors" and the Institute's Computer Vibration Program.

104.11 PONDING

When Composite Steel Joists are used in roofs, a ponding investigation shall be performed by the **specifying professional**.

* For further reference, refer to the Steel Joist Institute Technical Digest #3, "Structural Design of Steel Joist Roofs to Resist Ponding Loads" and the AISC Specification for Structural Steel Buildings.

104.12 UPLIFT

When Composite Steel Joists are used in roofs, and where uplift forces due to wind are a design requirement, these forces shall be indicated on the contract drawings in terms of net uplift in pounds per square foot (kilopascals). When these forces are specified, they shall be considered in the design of the joists and/or bridging. A single line of bottom chord bridging shall be provided near the first bottom chord panel points whenever uplift due to wind forces is a design consideration.

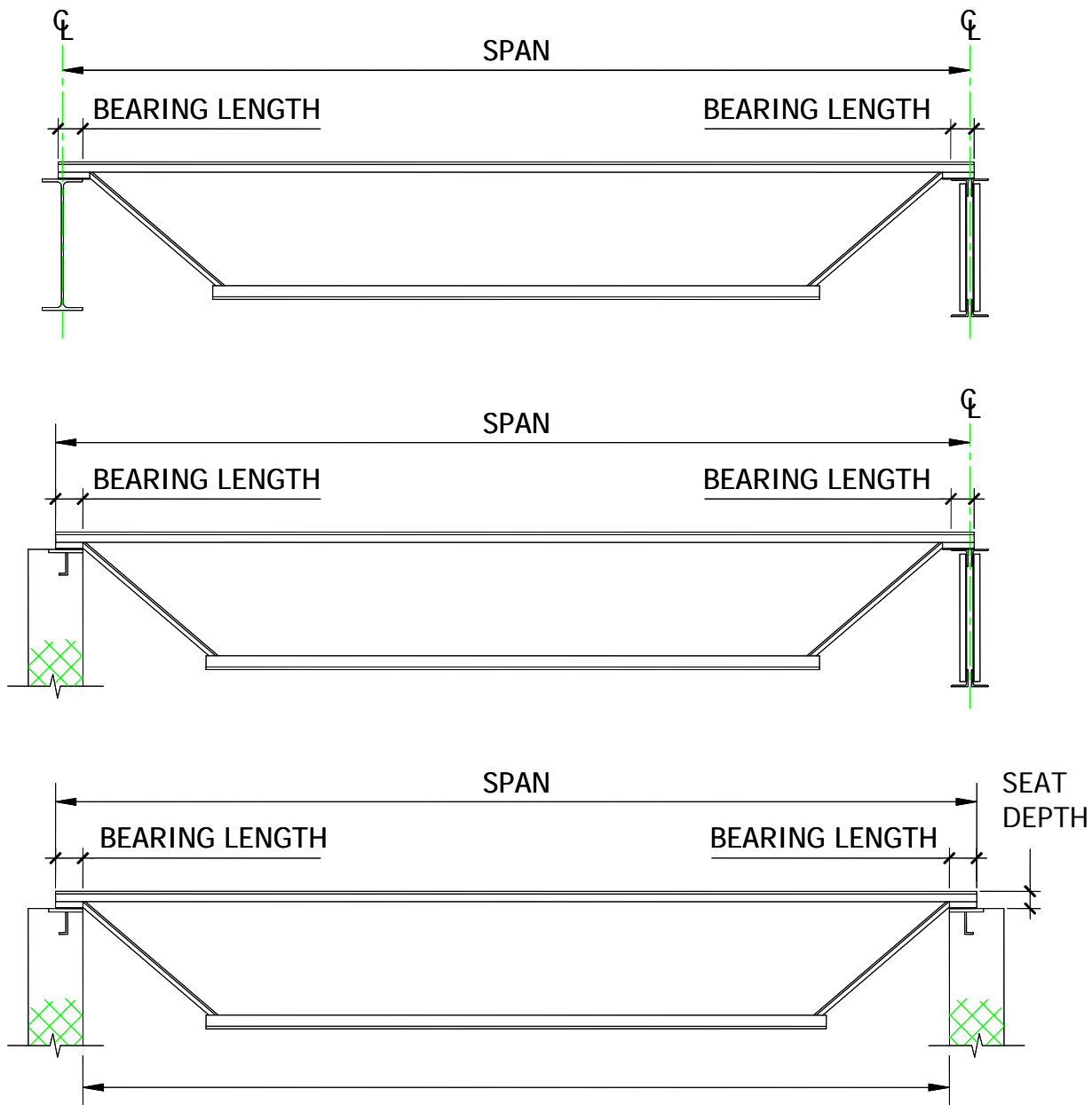
* For further reference, refer to Steel Joist Institute Technical Digest #6, "Structural Design of Steel Joist Roofs to Resist Uplift Loads".

104.13 INSPECTION

Joists shall be inspected by the manufacturer before shipment to verify compliance of materials and workmanship with the requirements of these specifications. If the purchaser wishes an inspection of the steel joists by someone other than the manufacturer's own inspectors, they shall be permitted to reserve the right to do so in their "Invitation to Bid" or the accompanying "Job specifications".

Arrangements shall be made with the manufacturer for such shop inspection of the joists at the manufacturing shop by the purchaser's inspectors at purchaser's expense.

**TABLE 104.2-1
DEFINITION OF SPAN**



- NOTES:
- 1) DESIGN LENGTH = SPAN - 0.33 FT
 - 2) BEARING LENGTH FOR STEEL SUPPORTS SHALL NOT BE LESS THAN SHOWN IN TABLE 104.4-1; FOR MASONRY AND CONCRETE NOT LESS THAN 6 INCHES
 - 3) PARALLEL CHORD JOISTS INSTALLED TO A SLOPE GREATER THAN ½ INCH PER FOOT SHALL USE SPAN DEFINED BY THE LENGTH ALONG THE SLOPE.

**SECTION 105.
ERECTION STABILITY AND
HANDLING***

When it is necessary for the erector to climb on the composite steel joists, extreme caution shall be exercised since unbridged joists exhibit some degree of instability under the erector's weight.

* For a thorough coverage of this topic, refer to Steel Joist Institute Technical Digest #9, "Handling and Erection of Steel Joists and Joist Girders".

(a) Erection Stability

Joist erection bridging requirements shall be determined by the joist manufacturer and indicated on the joist placement plans.

(b) Stability Requirements during Joist Erection

- (1) Before an employee is allowed on the composite steel joist: BOTH ends of composite joists at columns (or composite joists designated as column joists) shall be attached to its supports. For all other composite joists a minimum of one end shall be attached before the employee is allowed on the composite joist. The attachment shall be in accordance with Section 104.7- End Anchorage.

When a bolted seat connection shall be used for erection purposes, as a minimum, the bolts shall be snug tightened. The snug tight condition shall be defined as the tightness that exists when all plies of a joint are in firm contact. This shall be attained by a few impacts of an impact wrench or the full effort of an employee using an ordinary spud wrench.

- (2) On composite steel joists that do not require erection bridging as shown on the joist placement plans, only one employee shall be allowed on the composite joist unless all bridging is installed and anchored.
- (3) Where the span of the composite steel joist requires one line of bolted diagonal erection bridging nearest the mid-span of the joist, as indicated on the joist placement plans, the following shall apply:
 - a. Hoisting cables shall not be released until the row of bolted diagonal erection bridging is installed and anchored, unless an alternate method of stabilizing the composite steel joist has been provided; and
 - b. No more than one employee shall be allowed on these spans until all bridging is installed and anchored.
- (4) Where the span of the Composite Steel Joist requires two lines of bolted diagonal erection bridging nearest the third points of the joist, as indicated on the joist placement plans, the following shall apply:
 - a. Hoisting cables shall not be released until the two rows of bolted diagonal erection bridging are installed and anchored; and
 - b. No more than two employees shall be allowed on these spans until all other bridging is installed and anchored.
- (5) Where the span of the composite steel joist requires all lines of bridging to be bolted diagonal erection bridging as indicated on the joist placement plans, the following shall apply:
 - a. Hoisting cables shall not be released until all bridging is installed and anchored; and
 - b. No more than two employees shall be allowed on these spans until all other bridging is installed and anchored.



- (6) When permanent bridging terminus points can not be used during erection, additional temporary bridging terminus points are required to provide lateral stability.
- (7) In the case of bottom chord bearing joists, the ends of the composite joist shall be restrained laterally per Section 104.5(g) before releasing the hoisting cables.
- (8) After the composite steel joist is straightened and plumbed, and all bridging is completely installed and anchored, the ends of the joists shall be fully connected to the supports in accordance with Section 104.7-End Anchorage.

(c) Landing and Placing Loads

- (1) Except as stated in paragraph 105(c)(3) of this section, no “construction loads” ⁽¹⁾ shall be allowed on the Composite Steel Joists until all bridging is installed and anchored, and all joist bearing ends are attached. “construction loads” (for joist erection) means any load other than the weight of the employee(s), the joists, and the bridging bundle(s).
- (2) During the construction period, loads placed on the Composite Steel Joists shall be distributed so as not to exceed the non-composite capacity of the composite steel joists.
- (3) The weight of a bundle of joist bridging shall not exceed a total of 1000 pounds (454 kilograms). The bundle of joist bridging shall be placed on a minimum of 3 steel joists that are secured at one end. The edge of the bridging bundle shall be positioned within 1 foot (0.30 m) of the secured end.
- (4) No bundle of deck shall be placed on Composite Steel Joists until all bridging has been installed and anchored and all composite steel joist bearing ends attached, unless the following conditions are met:
 - a. The contractor has first determined from a “qualified person” ⁽²⁾ and documented in a site specific erection plan that the structure or portion of structure is capable of supporting the load. A “qualified person” means one who, by possession of a recognized degree, certificate, or professional standing, or who by extensive knowledge, training, and experience, has successfully demonstrated the ability to solve or resolve problems relating to the subject mater, the work, or the project;
 - b. The bundle of decking is placed on a minimum of 3 composite steel joists;
 - c. The composite steel joists supporting the bundle of decking are attached at both ends;
 - d. At least one row of bridging is installed and anchored;
 - e. The total weight of the decking does not exceed 4000 pounds (1816 kilograms);
 - f. The edge of the bundle of decking shall be placed within 1 foot (0.30 meter) of the bearing surface of the composite steel joist end.
- (5) The edge of any construction load shall be placed within 1 foot (0.30 meter) of the bearing surface of the composite steel joist end.

(d) Field Welding

- (1) All field welding shall be performed in accordance with contract documents. Field welding shall not damage the composite joists.
- (2) On cold-formed members whose yield strength has been attained by cold working, and whose as-formed strength is used in the design, the total length of weld at any one point shall not exceed 50 percent of the overall developed width of the cold-formed section.



(e) Handling

Particular attention shall be paid to the erection of Composite Steel Joists. Care shall be exercised at all times to avoid damage to the composite joists and accessories. Hoisting cables shall be attached at panel point locations and those locations shall be selected to minimize erection stresses.

Each Composite Steel Joist shall be adequately braced laterally before any loads are applied. If lateral support is provided by the bridging, the bridging lines as defined in Section 105(b), paragraphs (2), (3), (4) and (5), shall be anchored to prevent lateral movement.

(f) Fall Arrest Systems

Composite steel joists shall not be used as anchorage points for a fall arrest system unless written approval to do so is obtained from a “qualified person” as defined in paragraph 105(c)(3)(a).

⁽¹⁾ See Federal Register, Department of Labor, Occupational Safety and Health Administration (2001), 29 CFR Part 1926 Safety Standards for Steel Erection; Final Rule, §1926.757 Open Web Steel Joists - January 18, 2001, Washington, D.C. for definition of “construction load”.

⁽²⁾ See Federal Register, Department of Labor, Occupational Safety and Health Administration (2001), 29 CFR Part 1926 Safety Standards for Steel Erection; Final Rule, §1926.757 Open Web Steel Joists - January 18, 2001, Washington, D.C. for definition of “qualified person”.

SECTION 106.
SHEAR CONNECTOR
PLACEMENT AND WELDING

- (a) Shear connectors required on each side of the point of maximum positive or negative bending moment, shall be distributed uniformly between that point and the adjacent points of zero moment, unless otherwise specified. However the number of shear connectors placed between any concentrated load and the nearest point of zero moment shall be sufficient to develop the maximum moment required at the concentrated load point.
- (b) Studs shall be alternately placed on each chord angle section for double angle top chords. When constructability does not allow this to occur, stud placement shall be limited as follows:
 - 1. No more than three studs shall be placed consecutively on any one chord angle, and
 - 2. No more than 60% of the total number of studs shall be placed on any one chord angle.

Studs shall have a minimum of 1/2 inch (13 mm) concrete cover over the head of each stud (see Section 103.6(d)).

- (c) The minimum center-to-center spacing of stud connectors shall be six stud diameters along the longitudinal axis of the supporting composite joist, except that within the ribs of formed steel decks oriented perpendicular to the steel joists, the minimum center-to-center spacing shall be four stud diameters in any direction.
- (d) The distance measured along the longitudinal axis of the joist from the free edge of the concrete slab to the first stud shall not be less than the deck height plus four stud diameters.
- (e) The spacing of stud shear connectors along the length of the supporting joist shall not exceed eight times the slab depth or 36 inches (914 mm).
- (f) To resist uplift, the steel deck shall be anchored to all supporting members at a spacing not to exceed 18 inches (460 mm). Such anchorage shall be provided by stud connectors, a combination of stud connectors and arc spot (puddle) welds, or other devices.



SECTION 107.
SPECIAL CASES

When a method of shear transfer is used other than headed shear studs for developing composite joist behavior, the strength of shear connectors and details of composite construction shall be established by a test program that has been submitted to and accepted by the SJI.

CODE OF STANDARD PRACTICE FOR COMPOSITE STEEL JOISTS

Adopted by the Steel Joist Institute May 10, 2006
Revised to May 18, 2010 - Effective December 31, 2010

SECTION 1 GENERAL

1.1 SCOPE

The practices and customs set forth herein are in accordance with good engineering practice, tend to ensure safety in composite steel construction, and are standard within the industry. There shall be no conflict between this code and any legal building regulation. This code shall only supplement and amplify such laws. Unless specific provisions to the contrary are made in a contract for the purchase of composite steel joists, this code is understood to govern the interpretation of such a contract.

1.2 APPLICATION

This Code of Standard Practice is to govern as a standard unless otherwise covered in the architects' and engineers' plans and specifications.

1.3 DEFINITIONS

Buyer. The entity that has agreed to purchase material from the manufacturer and has also agreed to the terms of sale.

Erector. The entity that is responsible for the safe and proper erection of the materials in accordance with all applicable codes and regulations.

Material. Composite steel joists and accessories as provided by the seller.

Owner. The entity that is identified as such in the contract documents.

Placement Plans. Drawings that are prepared depicting the interpretation of the contract documents requirements for the material to be supplied by the seller. These floor and/or roof plans are approved by the **specifying professional**, buyer or owner for conformance with the design requirements. The seller uses the information contained on these drawings for final material design. A unique piece mark number is typically shown for the individual placement of the composite steel joists and accessories along with sections that describe the end bearing conditions and minimum attachment required so that material is placed in the proper location in the field.

Seller. A company certified by the Steel Joist Institute engaged in the manufacture and distribution of composite steel joists and accessories.

Specifying Professional. The licensed professional who is responsible for sealing the building contract documents, which indicates that he or she has performed or supervised the analysis, design and document preparation for the structure and has knowledge of the load-carrying structural system.



Structural Drawings. The graphic or pictorial portions of the contract documents showing the design, location and dimensions of the work. These documents generally include plans, elevations, sections, details, connections, all loads, schedules, diagrams and notes.

1.4 DESIGN

In the absence of ordinances or specifications to the contrary, all designs prepared by the **specifying professional** shall be in accordance with the Steel Joist Institute Standard Specifications for Composite Steel Joists, **CJ-Series**, of latest adoption.

1.5 RESPONSIBILITY FOR DESIGN AND ERECTION

When material requirements are specified, the seller shall assume no responsibility other than to furnish the items listed in Section 5.2 (a). When material requirements are not specified, the seller shall furnish the items listed in Section 5.2 (a) in accordance with Steel Joist Institute Standard Specifications for Composite Steel Joists, **CJ-Series**, of latest adoption, and this code. Pertinent design information shall be provided to the seller as stipulated in Section 6.1. The seller shall identify material by showing size and type. In no case shall the seller assume any responsibility for the erection of the item furnished.

1.6 PERFORMANCE TESTS FOR CJ-SERIES STEEL JOIST CONSTRUCTION

When a performance test on a composite steel joist is required, the following criteria shall be used:

- a) The performance test load shall be the maximum factored uniformly distributed composite design load for the selected composite steel joist.
- b) Joist self-weight and the weight of all test materials (i.e. bridging, top deck, slab, ceiling materials, etc.) shall be included in the calculation of applied performance test loading as appropriate for the composite steel joist during testing.
- c) Loading shall be uniformly distributed across the full length of the joist top chord, and the load application shall maintain uniform distribution throughout the test. At any stage during the application of the test loading, the test load shall not be distributed in such a manner as to result in any joist component being subjected to a higher proportion of force than intended by the composite steel joist design.
- d) At a minimum, a panel test assembly shall be comprised of a pair of joists with bridging, top deck, shear studs and concrete slab applied as used. The concrete shall be allowed adequate cure time as determined by the **specifying professional** (typically 28 days) prior to testing. The deck attachments and bridging shall be installed per the approved joist and deck placement plans. All bottom chord horizontal bridging rows shall be terminated by bracing back to the top chord of the adjacent joist or by a lateral restraint system which does not inhibit the vertical deflection of the panel test assembly.
- e) The performance test loading shall be applied at a rate of no greater than 25 plf per minute and shall be sustained for no less than 15 minutes. After the maximum test load has been removed for a minimum of 10 minutes, the remaining vertical displacement at midspan shall not exceed 20% of the vertical midspan deflection sustained under the full performance test load.
- f) All costs associated with such testing shall be borne by the purchaser.
- g) Joists that have been designed and manufactured and have satisfied the above performance test criteria shall be considered to satisfy the intent of the **CJ-Series** Standard Specification, and shall be considered safe for use in construction. No further proof of strength of individual joist components or connections is required.



SECTION 2 COMPOSITE JOISTS AND ACCESSORIES

2.1 COMPOSITE STEEL JOISTS

Composite steel joists shall carry the loads and meet the requirements of the Steel Joist Institute Standard Specifications for Composite Steel Joists, **CJ-Series**, of latest adoption.

CJ-Series joists are furnished with parallel chords only, and with minimum standard end bearing depth of 2½ inches (64 mm). **CJ-Series** joists shall be permitted to be furnished with either under slung or square ends.

2.2 JOIST LOCATION AND SPACING

The maximum joist spacing shall be in accordance with the requirements of Section 104.8, Steel Joist Institute Standard Specifications for Composite Steel Joists, **CJ-Series**, of latest adoption.

Where sidewalls, wall beams or tie beams are capable of supporting the floor slab or roof deck, the first adjacent composite steel joists may be placed one full space from these members. **CJ-Series** joists are provided with camber. These joists may have a significant difference in elevation with respect to the adjacent structure because of this camber. This difference in elevation should be given consideration when locating the first composite steel joist adjacent to a sidewall, wall beam or tie beam. Therefore, it is recommended that this joist be located one full space away from these members.

Where load bearing partitions occur parallel to joists, joists are generally placed under each such partition, and more than one such joist shall be provided if necessary to safely support the weight of such partition and the adjacent floor, less the live load, on a strip of floor one foot (0.305 m) in width. Where partitions occur perpendicular to the joists, they shall be treated as concentrated loads in accordance with Section 6.1.

2.3 JOIST EXTENSIONS

Composite steel joist extensions shall be in accordance with the requirements of the Steel Joist Institute Standard Specifications Load Tables & Weight Tables of latest adoption.

The magnitude and location of the loads to be supported, deflection requirements, and proper bracing of joist or Joist Girder Top Chord Extensions (S Type), Extended Ends (R Type) or full depth cantilever ends shall be clearly indicated on the structural drawings.

Extended joist ends shall be assumed to act non-compositely. In the absence of a load diagram, the extended top chord shall be designed for the uniformly distributed load.

2.4 CEILING EXTENSIONS

Ceiling extensions shall be furnished to support ceilings which are to be attached to the bottom of the joists. They are not furnished for the support of suspended ceilings. The ceiling extension shall be either an extended bottom chord element or a loose unit, whichever is standard with the manufacturer, and shall be of sufficient strength to properly support the ceiling.



2.5 BRIDGING AND BRIDGING ANCHORS

- (a) Bridging standard with the manufacturer and complying with the applicable Steel Joist Institute Standard Specifications for Composite Steel Joists, **CJ-Series**, of latest adoption shall be used for bridging all joists furnished by the manufacturer. Positive anchorage shall be provided at the ends of each bridging row at both top and bottom chords.
- (b) Diagonal cross bridging consisting of angles or other shapes connected to the top and bottom chords of **CJ-Series** joists shall be used when required by the Steel Joist Institute Standard Specifications for Composite Steel Joists, **CJ-Series**, of latest adoption.

Diagonal bridging, when used, shall have a ℓ/r ratio not exceeding 200.

- (c) For the **CJ-Series** joists, horizontal bridging is recommended for spans up to and including 60 feet (18.3 m) except where code requirements for erection stability and/or the Steel Joist Institute Specifications require bolted diagonal bridging.

CJ-Series joists, exceeding 60 feet (18.3 m) in length shall have bolted diagonal bridging for all rows.

Refer to Section 105 in the Steel Joist Institute Standard Specifications for Composite Steel Joists, **CJ-Series**, of latest adoption for erection stability requirements.

Refer to OSHA *Safety Standards for Steel Erection, 29 CFR 1926.757 – Open Web Steel Joists* for erection stability requirements.

Note: The requirements as per OSHA also apply for composite steel joists since, during erection, a composite joist is like any SJI steel joist. Only after the concrete has cured, does the joist become composite.

Horizontal bridging shall consist of continuous horizontal steel members. The ℓ/r ratio for horizontal bridging shall not exceed 300.

- (d) When bolted diagonal erection bridging is required, the following shall apply:
1. The bridging shall be indicated on the joist placement plan.
 2. The joist placement plan shall be the exclusive indicator for the proper placement of this bridging.
 3. Shop installed bridging clips, or functional equivalents, shall be provided where the bridging bolts to the steel joist.
 4. When two pieces of bridging are attached to the steel joist by a common bolt, the nut that secures the first piece of bridging shall not be removed from the bolt for the attachment of the second piece.
 5. Bridging attachments shall not protrude above the top chord of the steel joists.

2.6 CAMBERING

- (a) Manufacturing Tolerances

The camber tolerance for **CJ-Series** joists, as shown in Table 2.6, shall be -0 in., +1/4 in. (6 mm) or -0 in., + L / 1600 [where L = top chord length, in. (mm)] whichever is greater. Negative camber is not permitted.



**TABLE 2.6
Camber Tolerances**

TOP CHORD LENGTH feet (mm)	TOLERANCE - or + inches (mm)
20 (6,096)	-0, +1/4 (6)
30 (9,144)	-0, +1.4 (6)
40 (12,192)	-0, +1/4 (6)
50 (15,240)	-0, +3/8 (9)
60 (18,288)	-0, +1/2 (12)
70 (21,336)	-0, +1/2 (12)
80 (24,384)	-0, +5/8 (16)
90 (27,432)	-0, +5/8 (16)
100 (30,480)	-0, +3/4 (19)
110 (33,528)	-0, +7/8 (22)
120 (36,576)	-0, +7/8 (22)

(b) Camber Design

It is standard practice that a **CJ-Series** joist be furnished with sufficient camber for 100 percent of the non-composite dead load (joist, bridging, deck, and concrete slab). Joist bearings act as pinned/pinned-end connections with negligible end rotation restraint provided. Hence one shall obtain 100% of the predicted non-composite joist deflection when the full non-composite dead load has been placed on the composite joist. With the composite joist cambered for 100% of the non-composite dead load and the floor slab placed to a uniform thickness as suggested in Section 9, Concrete Placement, the floor shall be approximately level after the concrete has been placed.

Should the **specifying professional** strive to achieve a level floor after the composite dead and live loads are placed on the floor, additional joist camber can be specified on the “Composite Joist Floor Design Parameters Checklist”, see Appendix A. It is typical that the “Actual” composite dead and live loads supported by the composite steel joist are less than the full “Design” composite dead and live loads.

(c) Shop Inspection

When a check is to be made of the camber of a **CJ-Series** joist, the joist shall be carefully laid on its side with the joist intermittently supported prior to measuring the camber. With the joist lying on its side, the joist shall be in an unstressed condition at which time the amount of camber provided can be accurately determined.

Joists having measured camber outside of the camber tolerances shown in Table 2.6 shall have their camber adjusted by the joist manufacturer. At the option of the joist manufacturer, the joists shall be permitted to be rebuilt with the corrected camber.

2.7 SHEAR STUDS

The joist manufacturer shall indicate the size, quantity and layout of shear studs required on the stud installation drawings. Purchasing of the shear studs and ferrules, rental of shear stud welding equipment, installation of shear studs and field testing of shear studs is the responsibility of the shear stud installer.



SECTION 3 MATERIALS

3.1 STEEL

The steel used in the manufacture of composite joists shall comply with the Steel Joist Institute Standard Specifications for Composite Steel Joists, **CJ-Series**, of latest adoption.

3.2 PAINT

Standard shop practice is to supply composite steel joists unpainted to facilitate installation of welded shear studs. Paint may potentially hinder the installation of welded shear studs to the joist top chord.

SECTION 4 INSPECTION

Inspection of composite steel joists at the joist manufacturer's plant shall be made in accordance with the Steel Joist Institute Standard Specifications for Composite Steel Joists, **CJ-Series**, of latest adoption, Section 104.13.

Provisions for field inspection of projects involving composite steel joists shall be made by the **specifying professional**. This field inspection shall include verifying the concrete strength, concrete thickness and placement of the steel shear studs. For more information on stud placement see Section 106 of the Steel Joist Institute Standard Specifications for Composite Steel Joists, **CJ-Series**, of latest adoption. This field inspection shall not be provided by SJI member manufacturers.

SECTION 5 ESTIMATING

5.1 PLANS FOR BIDDING

Plans to serve as the basis for bids shall show the character of the work with sufficient clarity to permit making an accurate estimate and shall show the following:

- Designation and location of materials (see Section 5.2(a)), including any special design or configuration requirements.
- Locations and elevations of all steel and concrete supporting members and bearing walls.
- Joist depth.
- Joist span.
- Distance, each side of the joist centerline, to adjacent joists or other supporting members.



- Type and depth of floor deck.
- Concrete unit weight.
- Concrete compressive strength.
- Total depth of concrete slab.
- Loads and their locations as defined in Section 6.1(a).
- Location and length of joist extended ends.
- Location and size of all openings in floors and roofs.
- Location of all partitions.
- Composite Steel Joists requiring extended bottom chords.
- Deflection limitation.
- No paint on the joist. See **CJ-Series** Standard Specifications, Section 102.6 Paint.

5.2 SCOPE OF ESTIMATE

- (a) Unless otherwise specified, the following items shall be included in the estimate, and requirements shall be determined as outlined in Section 6.1.
- Composite Steel Joists.
 - Joist Extensions.
 - Ceiling Extensions.
 - Extended bottom chord used as strut.
 - Bridging and bridging anchors.
- (b) The following items shall not be included in the estimate but may be quoted and identified by the joist manufacturer as separate items:
- Headers for Composite Steel Joists, **CJ-Series**.
 - Shear connectors and/or ferrules.
 - Centering material and attachments.
 - Miscellaneous framing between joists for openings at ducts, dumbwaiters, ventilators, skylights, etc.
 - Loose individual or continuous bearing plates and bolts or anchors for such plates.
 - Erection bolts for composite joist end anchorage.
 - Horizontal bracing in the plane of the top and bottom chords from joist to joist or joist to structural framing and walls.
 - Moment plates.
 - Special joist configuration or bridging layouts for ductwork or sprinkler system.



SECTION 6 PLANS AND SPECIFICATIONS

6.1 PLANS FURNISHED BY BUYER

The buyer shall furnish the seller plans and specifications as prepared by the **specifying professional** showing all material requirements and composite steel joist designations.

(a) Design Input Required for Composite Steel Joists

The following basic information shall be provided by the **specifying professional**.

1. Joist Depth:

The joist depth includes the steel joist portion only, not the deck or concrete slab, in. (mm).

2. Joist Layout:

The joist plans shall show the layout of the composite steel joists, walls, columns, beams, girders and other supports, as well as floor and roof openings. The joist manufacturer shall determine the required composite joist span to be fabricated based on this information.

3. Finished Floor, Roof, and Bearing Elevations:

The elevation of finished floors, roofs, and bearings shall be shown with due consideration taken for the effects of dead load deflection.

4. Adjacent Member Spacing:

This is the distance to the adjacent member or to the edge of the slab (if an exterior joist), feet (m).

5. Type of Floor Deck:

Review each manufacturer's deck capacity for load capacity and deflection characteristics and specify the deck depth, profile and thickness to meet the building design.

6. Concrete Unit Weight, lb/ft.³ (kg/m³).

7. Concrete Compressive Strength:

28 day specified compressive strength of concrete, ksi (MPa).

8. Slab Thickness above the top ribs of the deck, in. (mm).

9. Loads

The Steel Joist Institute does not presume to establish the loading requirements for which structures are designed. The **specifying professional** shall provide the nominal loads and load combinations as stipulated by the applicable Code under which the structure is designed. At the present time the **CJ-Series** joists are assumed to be designed utilizing an LRFD design basis.

The **specifying professional** shall calculate and provide the magnitude and location of ALL JOIST LOADS including those shown below. When necessary to clearly convey information, a Load Diagram or Load Schedule shall be provided.



- a. Non-composite DL, lb/ft.² (kPa) - Concrete, joists, deck, bridging, and any other non-composite dead loads.
- b. Construction LL, lb/ft.² (kPa) – It is suggested that construction live load be determined considering the tributary area for each composite steel joist. See Appendix A, Footnote 1.
- c. Composite DL, lb/ft.² (kPa) - Partitions, mechanical, electrical, fireproofing, floor covering, ceilings, and other composite dead loads. The magnitude and location of composite dead loads shall be clearly dimensioned.
- d. Composite LL, lb/ft.² (kPa) - Reduced design live loads shall be permitted to be specified if applicable.

10. Special Loads:

The **specifying professional** shall be responsible for determining the applicable building code combinations. If the loading criteria are too complex to be adequately communicated in a simple load diagram, then the Specifying Professional shall provide a load schedule showing the specified design loads, load categories and required load combinations with applicable load factors.

The **specifying professional** shall show on the structural drawings and give due consideration to the following special loads and load effects:

- a. Snow drift loads including the accumulation of snow in the vicinity of obstructions such as penthouses, signs, parapets, adjacent buildings, etc.
- b. Axial loads at the joist end supports.
- c. Type and magnitude of end moments. For moment resisting joists framing near the end of a column, due consideration shall be given to extend the column length to allow a plate type connection between the top of the joist top chord and the column. Whenever possible, avoid resolving joist end moment forces through the joist bearing seat connection. A note shall be provided on the structural drawings stating that all moment resisting joists shall have all dead loads applied to the joist before the bottom chord struts are welded to the supporting connection whenever the moments provided do not include dead load. The top and bottom chord moment connection details and reinforcing steel placed in the concrete slab to resist negative flexural moments shall be designed by the **specifying professional**. The joist designer shall furnish the Specifying Professional with the joist detail information if requested.
- d. Structural bracing loads.
- e. Ponded rain water.
- f. Wind Uplift - When composite steel joists are utilized in roof applications, the magnitude and location of all wind uplift loads shall be clearly shown in terms of net uplift.
- g. Concentrated loads from mechanical units, fans, blowers, tanks, monorails, etc. - Where concentrated loads occur, the magnitude and location of these concentrated loads shall be shown on the structural drawings when, in the opinion of the **specifying professional**, they shall require consideration by the manufacturer.

For nominal concentrated loads, which have been accounted for in the specified uniform design loads, a “strut” to transfer the load to a panel point on the opposite chord shall not be required provided the sum of the concentrated loads within a chord pane, does not exceed 100 pounds and the attachments are concentric to the chord. If the slab is already designed to transfer concentrated loads from above to top chord panel points, the added member would not be required.

11. Camber:

Composite steel joists, unless otherwise specified, are cambered, in. (mm), for 100% of the non-composite weight of joist, bridging, deck and concrete slab. Additional camber to accommodate for actual sustained composite dead and live loads and concrete shrinkage/creep shall be identified by the **specifying professional**.



(b) Design Parameter Checklist

The SJI Composite Joist Floor Design Parameters Checklist shown in Appendix A provides a form for filling in the above standard design information listed in Section 6.1(a)(1) and Sections 6.1(a)(4) – 6.1(a)(9).

(c) Composite Joist Limitations

Composite Steel Joists have some limitations that the **specifying professional** shall be aware of. These include:

- The maximum deck depth is 3 inches (76 mm).
- The minimum slab thickness above the top of the deck shall be 2 inches (51 mm).
- When shear studs are utilized, they shall have at least 1/2 inch (13 mm) of concrete cover.
- The concrete shall be placed to provide a constant thickness along the entire span.

(d) Connections

Minimum End Anchorage for simple span gravity loading shall be in accordance with Steel Joist Institute Standard Specifications; Section 104.7 for **CJ-Series**. The end anchorage of a composite steel joist is the connection of the joist bearing seat to the support of the composite steel joist.

The adequacy of the end anchorage connection (bolted or welded) between the composite steel joist bearing seat and the supporting structure is the responsibility of the **specifying professional**. The contract documents shall clearly illustrate the end anchorage connection.

When the end anchorage is welded, it is recommended that the **specifying professional** consider a smaller fillet weld thickness in conjunction with a longer weld length.

The **specifying professional** is responsible for bridging termination connections. The contract documents shall clearly illustrate these termination connections.

The joist manufacturer is responsible for the design of the bearing seats of composite steel joists for the loads designated by the **specifying professional** in the contract documents.

(e) Special Considerations

The **specifying professional** shall indicate on the construction documents special considerations including:

- a) Oversized or other non-standard web openings
- b) Extended ends
- c) Non-SJI standard bridging

6.2 PLANS FURNISHED BY SELLER

The seller shall furnish the buyer with steel placement plans to show the material as specified on the construction documents and are to be utilized for field installation in accordance with specific project requirements as stated in Section 6.1. Composite Steel Joist placement plans shall include, at a minimum, the following:

1. Listing of all applicable loads as stated in Section 6.1 and used in the design of the composite steel joists as specified in the construction documents
2. Connection requirements for:
 - a) Joist supports
 - b) Field splices
 - c) Bridging attachments



3. Deflection criteria for live load and total load
4. Shear stud installation plans showing:
 - a) Size, quantity and location of all shear connectors to be installed on the composite steel joists
 - b) Design camber for each composite steel joist or reference to a table giving the design camber for each composite steel joist
5. Size, location, and connections for all bridging
6. Joist headers

All material shall be identified with its piece mark which also appears on the bill of material. **Composite Steel Joist placement plans do not require the seal and signature of the joist manufacturer's registered design professional.**

6.3 DISCREPANCIES

The **specifying professional's** bid plans and specifications shall be assumed to be correct in the absence of written notice from the buyer to the contrary. When plans are furnished by the buyer which does not agree with the Architect's bid plans, such detailed plans shall be considered as a written notice of change of plans. However, it shall be the buyer's responsibility to advise the seller of those changes which affect the composite steel joists.

6.4 APPROVAL

When composite joist placement plans are furnished by the seller, prints thereof are submitted to the buyer and owner for examination and approval. The seller allows a maximum of fourteen (14) calendar days in his schedule for the return of placement plans noted with the owner's and customer's approval, or approval subject to corrections as noted. The seller makes the corrections, furnishes corrected prints for field use to the owner/customer and is released by the owner/customer to start composite joist manufacture.

Approval by the owner/customer of the placement plans, sections, notes and joist schedule prepared by the seller indicates that the seller has correctly interpreted the contract requirements, and is released by the owner/customer to start joist manufacture. This approval constitutes the owner's/customer's acceptance of all responsibility for the design adequacy of any detail configuration of joist support conditions shown by the seller as part of his preparation of these placement plans.

Approval does not relieve the seller of the responsibility for accuracy of detail dimensions on the plans, nor the general fit-up of joists to be placed in the field.

6.5 CHANGES

When any changes in plans are made by the buyer (or the buyer's representative) either prior to or after approval of detailed plans, or when any material is required and was not shown on the plans used as the basis of the bid, the cost of such changes and/or extra material shall be paid by the buyer at a price to be agreed upon between buyer and seller.

6.6 CALCULATIONS

The seller shall design the composite steel joists in accordance with the Steel Joist Institute Standard Specifications, **CJ-Series**, of latest adoption, to support the load requirements of Section 6.1. The **specifying professional** may require submission of the composite steel joist calculations as prepared by a registered design professional responsible for the product design. If requested by the **specifying professional**, the composite steel joist manufacturer shall submit design



calculations with a cover letter bearing the seal and signature of the joist manufacturer's registered design professional. In addition to standard calculations under this seal and signature, submittal of the following shall be included:

1. Non-SJI standard bridging details (e.g. for cantilevered conditions, net uplift, etc.)
2. Connection details for:
 - a) Non-SJI standard connections (e.g. flush framed or framed connections)
 - b) Field splices
 - c) Joist headers
3. Shear stud requirements

SECTION 7 HANDLING AND ERECTION*

The current OSHA SAFETY STANDARDS FOR STEEL ERECTION, 29 CFR PART 1926, SUBPART R - STEEL ERECTION, refers to certain joists at or near columns to be designed with sufficient strength to allow one employee to release the hoisting cable without the need for erection bridging. **This STANDARD shall not be interpreted that any joist at or near a column line is safe to support an employee without bridging installed.** Many limitations exist that prevent these joists from being designed to safely allow an employee on an unbridged joist. Because of these limitations and as required by OSHA, these joists shall be erected by incorporating erection methods ensuring joist stability and either:

1. Installing bridging or otherwise stabilizing the joist prior to releasing the hoisting cable, or
2. Releasing the hoisting cable without having a worker on the joist.

A composite steel joist shall not be placed on any support structure unless such structure is stabilized. When composite steel joists are landed on a structure, they shall be secured to prevent unintentional displacement prior to installation.

A bridging terminus point shall be established before joist bridging is installed.

Composite steel joists shall not be used as anchorage points for a fall arrest system unless written direction to do so is obtained from a "qualified person" as defined in the Steel Joist Institute Standard Specifications for Composite Steel Joists, **CJ-Series**, of latest adoption, Section 105(c)(3)(a).

No modification that affects the strength of a composite steel joist shall be made without the written approval of the project engineer of record.

The buyer and/or erector shall check all materials on arrival at job site and promptly report to seller any discrepancies and/or damages. The buyer and/or erector shall comply with the requirements of the Steel Joist Institute Standard Specifications for Composite Steel Joists, **CJ-Series**, of latest adoption in the handling and erection of material.

The seller shall not be responsible for improper fit of material due to inaccurate construction work.

*For thorough coverage of this topic, refer to SJI Technical Digest #9, "Handling and Erection of Steel Joists and Joist Girders".



SECTION 8
INSTALLATION AND
INSPECTION OF SHEAR
STUD CONNECTORS

8.1 INSTALLATION

- (a) Locate headed shear studs, hereafter referred to as shear studs, on composite steel joists per details shown on the manufacturer's shear stud placement drawings and as outlined in any shear stud layout tables. Start laying out shear studs from each end of the joist and working toward the center. Alternate installation of the shear studs from one top chord angle to the other. Note minimum concrete longitudinal edge distance for shear studs on ends of joists as shown on placement drawings.
- (b) All shear studs shall be welded through the steel deck after the deck has been placed on the joists. Welding voltage, current, time, and gun settings for lift and plunge shall be set at optimum settings for the particular size of shear studs and range of joist top chord thicknesses, based on recommendations of the shear stud manufacturer and automatic shear stud welding equipment manufacturer, or both. The shear stud installer should consult AWS C5.4, *Recommended Practices for Stud Welding*, for technique guidance. All welding shall comply with AWS D1.1, *Structural Welding Code - Steel, Section 7, Stud Welding*.
- (c) Each shear stud shall be provided with the appropriate ceramic ferrule (arc shield) designated by the shear stud manufacturer as designed for weld through deck application. Ferrules shall be stored in a moisture free environment and kept dry during installation.
- (d) Prior to welding of shear studs, the top surface of the joist top chords shall be clean, unpainted and free of heavy rust, dirt, sand, oil, grease, water, or other foreign substances. The surfaces of the deck prior to stud welding shall be free of heavy rust or mill scale, moisture, dirt, sand, or other construction related waste materials.
- (e) Prior to welding, the steel deck shall rest tightly against the top chord of the composite steel joist.
- (f) Shear studs shall not be welded through more than 1 thickness of 16 gage deck or two thicknesses of 18 gage deck or lighter. Total galvanizing thickness on one thickness or two thicknesses of deck shall not exceed 1.25 oz. per square foot total for both sides of the deck.
- (g) Welding of shear studs shall not be done when the base metal is below 0°F (-18°C) or when the surface is wet or exposed to falling rain or snow. When the base metal temperature is between 0°F (-18°C) and 32°F (0°C), welding shall be permitted to only be done with appropriate set up, pre-production testing and inspection procedures as outlined in AWS D1.1 *Structural Welding Code - Steel, Section 7.5, Technique*.
- (h) Qualification of the stud application procedure used to weld shear studs through metal deck is outlined in AWS D1.1, *Structural Welding Code - Steel, Section 7.6 Stud Application Qualification Requirements*. This document requires that a minimum of ten (10) shear studs shall be welded using the decking and base material representative of the conditions to be used during construction. The ten (10) studs shall then be successfully bend or tensile tested. A document recording the details and settings including the weld set up used for this test shall be prepared prior to beginning of any production shear stud welding. A copy of the Application Qualification Test Data shall be furnished to the Engineer of Record as outlined in AWS D1.1, *Structural Welding Code- Steel, Section 7.6.7 Application Qualification Test Data*. At the beginning of each day's or shift's production, Pre-production testing in accordance with AWS D1.1 *Structural Welding Code - Steel, Section 7.7 Production Control* shall be performed on the first two shear studs that are welded.



8.2 INSPECTION

- (a) The welding of shear studs requires special inspection. The owner, or the **specifying professional**, acting as owner's agent, shall employ one or more special inspectors who shall provide inspections of the shear stud welds on a continual and timely basis. The special inspector's duties include verifying welder's qualifications, welding preparation, welding procedures and conformance of materials. Unless otherwise specified in a contract document, the stud installer shall be responsible for application qualification tests, pre-production tests and removal of the ferrule from each weld for inspection purposes.
- (b) To ensure proper welds, bend test a minimum of 1 out of every 100 shear connector studs production welded, by either striking the shear stud with a hammer or placing a pipe or other hollow device over the shear stud and manually or mechanically bending the shear stud 15° from its original axis. Shear studs shall be bent along the longitudinal axis of the joist toward the nearest end of the joist. If failure occurs in the weld zone, a minimum of two adjacent shear studs shall be satisfactorily bend tested. The special inspector, where conditions warrant, shall be permitted to select a reasonable number of additional shear studs to be subjected to a 15° bend test.
- (c) If, in the judgment of the **specifying professional**, shear studs welded during the progress of the work are not in accordance with AWS D1.1, Structural Welding Code - Steel, Section 7, *Stud Welding* requirements, as indicated by inspection and testing, corrective action shall be required of the shear stud installer. At the shear stud installer's expense, the shear stud installer shall make the set-up changes necessary to ensure that shear studs subsequently welded meet code requirements.
- (d) The shear stud installer shall certify to the **specifying professional** that the shear studs were installed in accordance with the requirements of AWS D1.1, Structural Welding Code - Steel, Section 7, *Stud Welding*.

SECTION 9 CONCRETE PLACEMENT

It is normal practice for joist manufacturers to camber composite steel joists for the full non-composite dead load. This joist camber, while theoretically providing a flat floor surface, after placing of the concrete is completed, requires special consideration relative to concrete placement.

The SJI suggested method for concrete placement is to utilize the "Constant Slab Thickness Method". In this method the concrete slab is placed at a constant thickness across the entire length of the composite steel joist. The reasons to use this method include the following:

- Full concrete slab thickness shall be provided along the entire composite joist span to carry the composite steel joist compressive loads.
- A full thickness slab is necessary to provide required fire protection.
- Sufficient concrete cover shall be provided over the heads of the shear studs.
- The potential for over runs in concrete placing volume shall be greatly reduced.
- Deflections of the composite steel joist under the non-composite loading can be more accurately predicted vs. with a variable thickness slab.



Concrete construction joints should ideally be located between joists. When a construction joint is located closer than 12 in. (305 mm) from the longitudinal centerline of any given composite steel joist, it is the responsibility of the **specifying professional** to determine whether extra transverse steel reinforcing needs to be provided to assure that the composite properties of the supporting member with shear studs has not been affected.

SECTION 10 BUSINESS RELATIONS

10.1 PRESENTATION OF PROPOSALS

All proposals for furnishing material shall be made on a Sales Contract Form. After acceptance by the buyer, these proposals shall be approved or executed by a qualified official of the seller. Upon such approval the proposal becomes a contract.

10.2 ACCEPTANCE OF PROPOSALS

All proposals are intended for prompt acceptance and are subject to change without notice.

10.3 BILLING

Contracts on a lump sum basis are to be billed proportionately as shipments are made.

10.4 PAYMENT

Payments shall be made in full on each invoice without retention.

10.5 ARBITRATION

All business controversies which cannot be settled by direct negotiations between buyer and seller shall be submitted to arbitration. Both parties shall sign a submission to arbitration and if possible agree upon an arbitrator. If they are unable to agree, each shall appoint an arbitrator and these two shall appoint a third arbitrator. The expenses of the arbitration shall be divided equally between the parties, unless otherwise provided for in the agreements to submit to arbitration. The arbitrators shall pass finally upon all questions, both of law and fact, and their findings shall be conclusive.

